

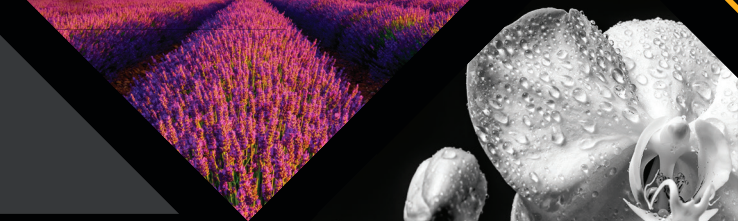
PermaJet

PROFESSIONAL INKJET MEDIA



INKJET MEDIA PRODUCT GUIDE

ISSUE 23





PermaJet
PROFESSIONAL INKJET MEDIA



Founded in 1983 in the heart of Warwickshire, The Imaging Warehouse began with the development of the Nova Slot Processor, one of the most innovative and valued products still used in darkrooms around the world.

PermaJet was born in 2005 and was an instrumental part of the launch of the first digital Fibre Based Baryta materials which emulated the traditional darkroom paper. Using the technical experience and knowledge gained over 3 decades of being in the photographic imaging industries, PermaJet has gone on to push the boundaries of inkjet technology, proven by the numerous industry awards they have achieved over the years.

The comprehensive range of PermaJet inkjet media includes something for everyone; from the avid home-printer, to the competition panel and exhibition creators, to the high-volume professional labs alike.

PermaJet - passionate about image.

Meet the team...



Robin Whetton



Elaine Whetton



Steve Price



Adam Hinchcliffe



Sue Sedgwick



Colin Hulley



Louise Hill



Debbie Pople



Bill Whetton



Charlie Whetton



Abi Symons



Steph Rowley



Alex Briscoe



Simon Bray

CONTENTS

Inkjet Photo Paper

Digital Photo	4
Traditional Baryta	8
Smooth & Textured Fine Art	11
Heritage	14
Double-Sided	16
Greetings Cards & Postcards	17
DryLab Media	21

Inkjet Canvas

Fine Art Inkjet Canvas	18
Production Canvas	19
Canvas Varnish & Starter Kits	20

Hardware

Protective Printer Covers	21
Canon Desktop	22
Canon Large Format	24
Scanners	26

Presentation

Preservation & Protection	28
Magnetic Image Blocks	29
Creasing Tools & Mountboard	30
SnapShut Folio	31

Education

ICC Profiles	32
The Photographic Academy	34
'The Knowledge' PermaJet range overview	35

Visit www.permajet.com for pricing and further information.



Follow [@permajet](https://www.instagram.com/permajet) on social media

Ink compatibility key:

AQUEOUS	SOLVENT
LATEX	ECO-SOLVENT

DIGITAL PHOTO

EVERYDAY, HIGH QUALITY PRINTING



4

A collection of the **most popular** photo papers including gloss, lustre/semi-gloss and matt along with **creative** options for those wanting to experiment with print whilst keeping to a **smaller budget**.

Pin-sharp results are achieved across all medias within this group so your everyday images are shown at their **best every time**. A statement backed up by the many industry **award winners** within this range.

The papers in this collection are **flexible**, feeding through printers easily without compromising on lightfastness and quality. This all leads to a more efficient workflow and **happier printing**.

GLOSS 271



This is an **instant dry, high gloss** paper with a **bright white** base. It prints vibrant colours and crisp details, perfect for everyday family photos right through to commercial studio work. The surface reproduces **beautiful tonal range** and **deep contrast**, finished off with a smooth, sparkling gloss that will add life to any image. Gloss 271 is a great choice for bold, high-key photography and graphic work that needs to look sharp and punchy.

Ideal for all types of print output where a high gloss finish is required.

	CODE	SIZE	PACK
Sheets	APJ50802	6" x 4"	100
	APJ50804	6" x 4"	1000
	APJ50805	7" x 5"	100
	APJ50807	7" x 5"	500
	APJ50808	10 x 8"	25
	APJ50812	A4	25
	APJ50814	A4	50
	APJ50815	A4	100
	APJ50817	A4	250
	APJ50819	A4	1000
	APJ50822	A3	25
	APJ50824	A3	50
	APJ50829	A3	500
	APJ50832	A3+	25
	APJ50834	A3+	50
	APJ50842	A2	25
	Rolls	APJ50849	13" Roll
APJ50858		17" Roll	30mtr
APJ50868		24" Roll	30mtr
APJ50898		44" Roll	30mtr
APJ50899		60" Roll	30mtr

OYSTER 271



Our most popular paper, Oyster 271, is **instant dry** with a **bright white base** and **subtle lustre surface**. It delivers a **wide tonal range** and rich, saturated colours, guaranteeing even complex images look their best. Its UV protective, microporous supercoat adds high levels of resistance to moisture and fading, ensuring your photos look fantastic for years to come.

The classic 'all-rounder' - suitable for any subject type.

	CODE	SIZE	PACK
Sheets	APJ50902	6" x 4"	100
	APJ50904	6" x 4"	1000
	APJ50905	7" x 5"	100
	APJ50907	7" x 5"	500
	APJ50908	10 x 8"	25
	APJ50912	A4	25
	APJ50914	A4	50
	APJ50915	A4	100
	APJ50917	A4	250
	APJ50919	A4	1000
	APJ50922	A3	25
	APJ50924	A3	50
	APJ50929	A3	500
	APJ50932	A3+	25
	APJ50934	A3+	50
APJ50942	A2	25	
Rolls	APJ50949	13" Roll	10mtr
	APJ50955	17" Test Roll	5mtr
	APJ50958	17" Roll	30mtr
	APJ50968	24" Roll	30mtr
	APJ50978	36" Roll	30mtr
	APJ50998	44" Roll	30mtr
APJ50999	60" Roll	30mtr	

SMOOTH PEARL 280



Smooth Pearl 280 is an **instant dry** paper with a **subtle pearl finish**. It has a **warm base tint** that makes it ideal for skin tones, portraiture studios, landscape photography and art reproductions. The superb **smooth surface** with its refined pearl finish gives the feeling of luxury found in more expensive papers.

Smooth Pearl 280 has an **exceptional Dmax**, capable of producing deep blacks and wide tonal range, suited for both monochrome and colour work.

Exceptional Dmax readings mean the pronounced pearl finish will produce warm, vibrant colour and monochrome images with stark definition and tonal range.

	CODE	SIZE	PACK
Sheets	APJ50702	6" x 4"	100
	APJ50705	7" x 5"	100
	APJ50714	A4	50
	APJ50717	A4	250
	APJ50719	A4	1000
	APJ50724	A3	50
	APJ50729	A3	500
	APJ50732	A3+	25
	APJ50742	A2	25
	Rolls	APJ50758	17" Roll
APJ50768		24" Roll	30mtr
APJ50798		44" Roll	30mtr
APJ50799		60" Roll	30mtr

SMOOTH GLOSS 280



Smooth Gloss 280 is an **instant dry** inkjet paper with a mirror-like, **high gloss finish** and a **warm base tint**. Images print with vibrancy and detailed precision, making it the perfect paper for photographers with **high-impact** advertising and studio work.

The **high Dmax** is capable of deep blacks and good tonal range, ensuring prints on Smooth Gloss 280 are **punchy and sharp**, finished off with the gloss surface that adds an extra level of depth and impact.

This media will produce vibrant colour and monochrome images with great definition and tonal range.

This media will produce vibrant colour and monochrome images with great definition and tonal range.

	CODE	SIZE	PACK
Sheets	APJ50502	6" x 4"	100
	APJ50505	7" x 5"	100
	APJ50514	A4	50
	APJ50517	A4	250
	APJ50519	A4	1000
	APJ50524	A3	50
	APJ50529	A3	500
	APJ50534	A3+	50
	APJ50544	A2	50
	Rolls	APJ50568	24"
APJ50598		44"	30mtr

TITANIUM GLOSS 300



Image Leigh Preston



Photography
News

2020

AWARDS

[WINNER]

Titanium Gloss 300 is a **high-gloss** inkjet paper with a **unique metallic base**. It has a **silvery undertone** that gives life to images where subjects contain metal, water, and reflective surfaces, making them sparkle under the light.

This **award-winning** paper is the ideal creative choice to make your work stand out and have **high impact**. The gloss surface is not overpowering, instead adding a luxurious finish, whilst colours almost glow thanks to the light reflective base. It prints with **incredible detail** and clarity and works extremely well with images that have vibrant colours, deep blacks, and white/silver areas that allow the metallic base to show through.

Perfect for avant-garde images and subjects containing reflective surfaces, such as jewellery, cars or water.

	CODE	SIZE	PACK
Sheets	APJ24902	6" x 4"	100
	APJ24905	7" x 5"	100
	APJ24912	A4	25
	APJ24922	A3	25
	APJ24932	A3+	25
	APJ24942	A2	25
Rolls	APJ24958	17" Roll	30mtr
	APJ24968	24" Roll	30mtr
	APJ24988	44" Roll	30mtr
	APJ24998	60" Roll	30mtr

TITANIUM LUSTRE 280





Image Paul Hassell



WINNER

BEST

PROFESSIONAL
PAPER 2015

The Societies
of Photographers

Titanium Lustre 280 is an **award-winning** inkjet paper with a **unique metallic base** and **subtle lustre surface**. Images leap off the page with a dramatic appearance and **high level of detail**.

This paper works particularly well with **monochrome and HDR images**, its silvery metallic base lending itself to **wide tonal ranges** and high contrast images. The subtle undulations of the lustre surface catch the light beautifully, adding a sparkle to subjects that contain metal or reflective surface, whilst the metallic paper base adds a true to life feel. This makes Titanium Lustre 280 a creative and stand out choice for that special piece of work.

This is a fantastic creative option for monochrome and HDR photographers.

	CODE	SIZE	PACK
Sheets	APJ25002	6" x 4"	100
	APJ25005	7" x 5"	100
	APJ25012	A4	25
	APJ25022	A3	25
	APJ25032	A3+	25
	APJ25042	A2	25
Rolls	APJ25069	24" Roll	30mtr
	APJ25089	44" Roll	30mtr
	APJ25098	60" Roll	30mtr

PHOTO LUSTRE 310



Image Paul Hassell



WINNER

BEST

PROFESSIONAL
PAPER 2018

The Societies
of Photographers

Photography
News

2018

AWARDS

INKJET MEDIA:
PHOTOGRAPHIC FINISH

Photo Lustre 310 is a **bright white** paper with a **luxurious lustre surface**. Colours are deep and saturated, whilst monochrome images print with **incredible tonal range and contrast**. The **high Dmax** gives intense, rich blacks whilst still achieving definition in shadow areas.

This award-winning paper has a **heavy base weight** for a feeling of quality rarely found in such an economical paper, and a tough and relatively **scratch-resistant** surface. This makes Photo Lustre 310 ideal for all manners of usage where punchy colours and bold contrast is a priority, from photographic portfolios to graphic design displays.

Ideal for all types of printing output where quality is essential, from competition to exhibition use.

	CODE	SIZE	PACK
Sheets	APJ22002	6" x 4"	100
	APJ22005	7" x 5"	100
	APJ22012	A4	25
	APJ22014	A4	50
	APJ22022	A3	25
	APJ22024	A3	50
	APJ22032	A3+	25
	APJ22042	A2	25
Rolls	APJ22058	17" Roll	30mtr
	APJ22068	24" Roll	30mtr
	APJ22078	36" Roll	30mtr
	APJ22098	44" Roll	30mtr

ULTRA PEARL 295





Image Paul Hassell



Ultra Pearl 295 is a **bright white** inkjet paper with a traditional **pronounced pearl surface**. The brilliant white base lifts images and adds a crisp look suited to **bold and high-key work**. It has a **high Dmax** that prints deep, rich blacks that contrast beautifully with the base tint.

It is particularly suited to commercial work, from school photography to weddings, thanks to its scuff-resistant surface and anti-scan properties, deterring any attempts to replicate your prints.

A must for all photographers and studio labs who require a highly robust image protection layer with a difference.

	CODE	SIZE	PACK
Sheets	APJ51002	6" x 4"	100
	APJ51004	6" x 4"	1000
	APJ51006	7" x 5"	100
	APJ51007	7" x 5"	500
	APJ51012	A4	25
	APJ51015	A4	100
	APJ51019	A4	1000
	APJ51022	A3	25
	APJ51024	A3	50
	APJ51032	A3+	25
	APJ51034	A3+	50
	APJ51042	A2	25
Rolls	APJ51049	13" Roll	10mtr
	APJ51055	17" Roll	5mtr
	APJ51058	17" Roll	30mtr
	APJ51068	24" Roll	30mtr
	APJ51078	36" Roll	30mtr
	APJ51098	44" Roll	30mtr
	APJ51099	60" Roll	30mtr

MATT PLUS 240



Acid FREE!

AQ

Matt Plus 240 is a midweight paper with a **smooth matt surface**. Create vibrant, impactful prints with the **sumptuous matt surface** that gives depth to images. Prints with incredible **sharp details** and **rich colours**, and an impressive tonal range for monochrome work.

It has a clean white base tint which delivers accurate prints, making it a fantastic choice for digital artwork reproductions, photographic wall art, and marketing materials.

Suitable for a whole range of applications from monochrome reproductions to colour repro work such as flyers.

	CODE	SIZE	PACK
Sheets	APJ51102	6" x 4"	100
	APJ51104	6" x 4"	1000
	APJ51116	7" x 5"	100
	APJ51117	7" x 5"	500
	APJ51112	A4	25
	APJ51114	A4	50
	APJ51115	A4	100
	APJ51119	A4	500
	APJ51122	A3	25
	APJ51124	A3	50
	APJ51129	A3	500
	APJ51132	A3+	25
	APJ51134	A3+	50
	APJ51142	A2	25

	CODE	SIZE	PACK
Rolls	APJ51148	13" Roll	10mtr
	APJ51158	17" Roll	30mtr
	APJ51168	24" Roll	30mtr
	APJ51198	44" Roll	30mtr
	APJ51199	60" Roll	30mtr

MATT PROOFING 160



Acid FREE!

AQ

Matt Proofing 160 is the lightest inkjet paper in the PermaJet range and a very cost-effective option. It has a **smooth matt surface** and is designed with image proofing in mind, ideal for producing test prints and contact sheets without wasting higher cost materials.

A popular choice for contact printing or proofing your work before producing your masterpiece on PermaJet's high quality range of media.

	CODE	SIZE	PACK
Sheets	APJ51516	A4	150
	APJ51519	A4	750
	APJ51525	A3	75
	APJ51529	A3	750
	APJ51535	A3+	75

	CODE	SIZE	PACK
Rolls	APJ51558	17" Roll	30mtr
	APJ51568	24" Roll	30mtr
	APJ51578	44" Roll	30mtr

DIGITAL TRANSFER FILM 165µ



AQ

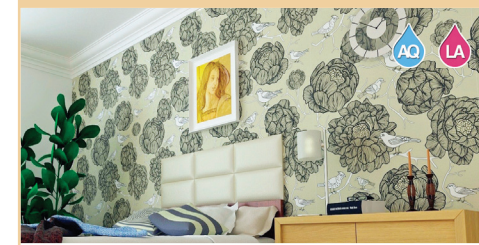
Digital Transfer Film 165µ is a **specialist clear film** for those wanting to combine the world of darkroom with digital inkjet printing. Create large format **digital inkjet negatives** which can be used in the darkroom to transfer to traditional papers.

A darkroom/digital printer's delight! At last a film perfectly created for 'contact printing' onto traditional darkroom papers or, when backed with white card, produces a result that is highly comparable to a printed Ilfochrome image.

	CODE	SIZE	PACK
Sheets	APJ52111	A4	10
	APJ52113	A4	50
	APJ52121	A3	10
	APJ52123	A3	50

	CODE	SIZE	PACK
Rolls	APJ52158	17" Roll	30mtr
	APJ52168	24" Roll	30mtr
	APJ52178	36" Roll	30mtr
	APJ52199	60" Roll	30mtr

WALL-ART MATT 170



AQ

LA

An aqueous, high quality **matt finish wallpaper** designed for water based printing. The **smooth surface** offers outstanding colour and scratch resistance properties, allowing a water resistant print to be achieved. Its base weight of 170gsm makes it tough enough to handle without tearing but pliable enough to apply and trim like a "normal" wallpaper!

This wallpaper can be applied to any wall with a standard paste and is also great for covering over small wall cracks (Latex compatible).

Personalised wall art is fast becoming a popular means of creating a professional background or wall covering. Perfect for interior design, office décor, showrooms, exhibition use and many more applications.

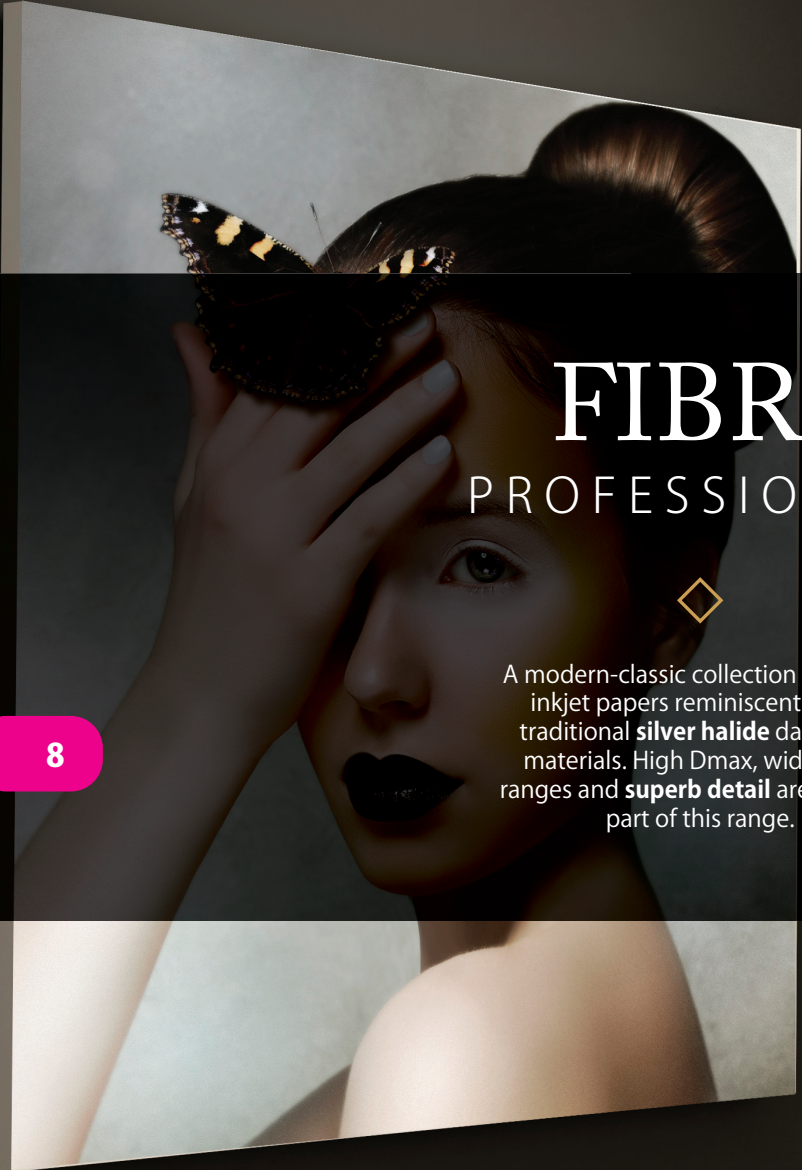
	CODE	SIZE	PACK
Rolls	APJ24468	24" Roll	30.5mtr
	APJ24488	44" Roll	30.5mtr

WHY NOT TRY... TEST PACK 1: DIGITAL PHOTO

Not sure which Digital Photo paper is right for you? Our Test Pack provides the opportunity to trial every paper within this range and discover for yourself the amazing qualities of each surface.

CODE	SIZE	SHEETS OF EACH	TOTAL SHEETS
APJ20041	A4	2	20





FIBRE BASED BARYTA

PROFESSIONAL, EXHIBITION QUALITY MEDIA



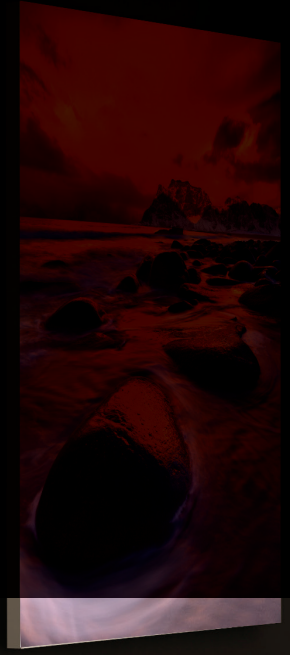
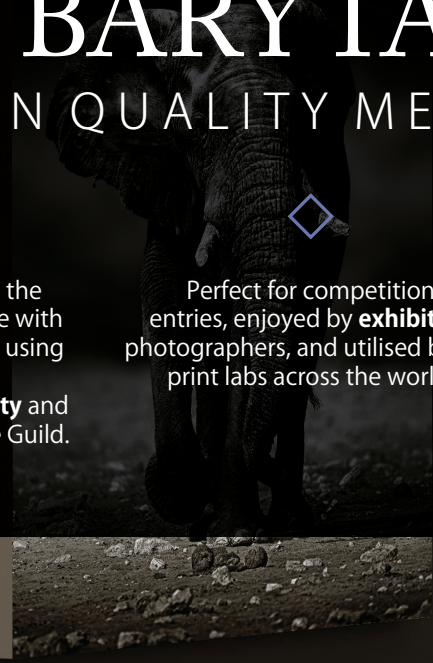
A modern-classic collection of digital inkjet papers reminiscent of the traditional **silver halide** darkroom materials. High Dmax, wide tonal ranges and **superb detail** are all a key part of this range.



Natural wood pulp make up the base of the papers in this range with **specialist coatings** embedded using multi-layer technology. Each paper is certified for **quality** and **longevity** by the Fine Art Trade Guild.



Perfect for competition entries, enjoyed by **exhibition** photographers, and utilised by top print labs across the world.



FB GOLD SILK 315



FB Gold Silk 315 is a fibre based inkjet paper with a **satiny surface** and **natural warm base tint**. This **award-winning** paper has a **record breaking Dmax**, enabling you to print the **deepest, velvety blacks** that create contrast and definition. With **pin-sharp details** and beautiful colour and monochrome capability, combined with the sumptuous silk surface, FB Gold

Silk is the epitome of quality. It replicates traditional baryta darkroom materials with a finesse that will impress any viewer.

Use this to create digital work indistinguishable from an original darkroom fibre based print. Present your monochrome images in their full glory.

*"For all practical purposes
this paper may be considered perfect."*

- Mike McNamee, Editor of Professional Imagemaker

	CODE	SIZE	PACK
Sheets	APJ22713	A4	25
	APJ22723	A3	25
	APJ22733	A3+	25
	APJ22743	A2	25
Rolls	APJ22767	24" Roll	15mtr
	APJ22797	44" Roll	15mtr
	APJ22798	60" Roll	15mtr

FB ROYAL GLOSS 310



FB Royal Gloss 310 is a fibre based inkjet paper with a **refined gloss surface** and **natural white base tint**. Reminiscent of traditional glazed darkroom materials, this paper has a beautiful look and feel with **subtle undulations** through the surface. It prints with glorious detail and true to life colours thanks to the natural white base, the perfect option for wildlife, portraiture and landscape photographers.

This Alpha Cellulose paper has an acid-free baryta base and a desirable heavyweight feel, ideal for fine art exhibitions, competitions and more. Its print quality is exceptional and will be sure to impress any traditional darkroom lovers.

The consistent gloss surface and heavyweight base offers a true similarity to a traditional glazed fibre based print.

	CODE	SIZE	PACK
Sheets	APJ62613	A4	25
	APJ62623	A3	25
	APJ62633	A3+	25
	APJ62643	A2	25
Rolls	APJ62658	17" Roll	15mtr
	APJ62668	24" Roll	15mtr
	APJ62688	44" Roll	15mtr
	APJ62698	60" Roll	15mtr

ICC Profiles

Generic and custom ICC Profiles are available for all PermaJet paper.
Go to page 32 for more information.



FB MATT 285



Image Dave Lowe



FB Matt 285 is a fibre based inkjet paper with a **smooth matt surface** and **bright white base tint**. Reminiscent of traditional darkroom paper, and the only matt variety in the range, it is a fantastic alternative for photographers and artists who prefer matt finishes.

This Alpha Cellulose paper is highly desirable for its **velvety smooth** matt surface, which prints with nuanced tones and sharp details. It's the perfect choice for a variety of images, from soft landscapes to striking architecture, and will capture every detail with its superior baryta base layer.

This paper is the perfect matt alternative to conventional silver halide darkroom paper. When printing modern art or landscape, FB Matt fits the bill perfectly.

	CODE	SIZE	PACK
Sheets	APJ20613	A4	25
	APJ20623	A3	25
	APJ20633	A3+	25
	APJ20643	A2	25
Rolls	APJ20657	17" Roll	15mtr
	APJ20667	24" Roll	15mtr
	APJ20697	44" Roll	15mtr
	APJ20698	60" Roll	15mtr

FB PEARL 300



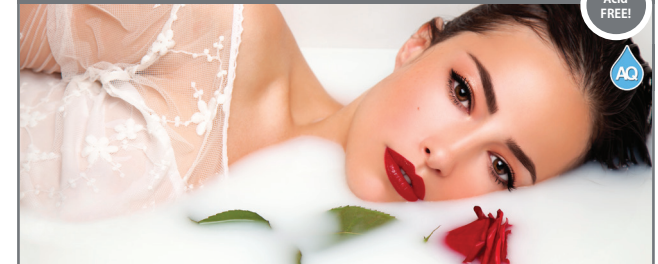
FB Pearl 300 is a fibre based inkjet paper with a **stunning pearl surface** and **natural white base tint**. Create sumptuous prints reminiscent of traditional silver halide darkroom materials, with excellent tonal range, detail and Dmax, the perfect choice for monochrome workers. Colour photography and artwork will print with a vividness and depth that draws the viewer in.

It's an excellent choice for portrait and landscape photography thanks to its **wide tonal range** capability and natural white base. Made from Alpha Cellulose, this paper is acid and **OBA free**, allowing for 100% archival quality prints.

Highly suited to the photographer who is in need of a media reminiscent of the true darkroom equivalent. Rich colours, tones and deep blacks excel on this paper. Ideal for skin tones and landscapes.

	CODE	SIZE	PACK
Sheets	APJ63113	A4	25
	APJ63123	A3	25
	APJ63133	A3+	25
	APJ63143	A2	25
Rolls	APJ63158	17" Roll	15mtr
	APJ63168	24" Roll	15mtr
	APJ63188	44" Roll	15mtr

FB DISTINCTION 320



FB Distinction 320 is a fibre based inkjet paper with a **subtle gloss surface** and **bright white base tint**. Reminiscent of traditional darkroom materials, this baryta paper prints with exceptional detail, Dmax and tonal range. The gloss surface has a **delicate sheen** that elevates photographs and artwork.

Create bold, punchy prints that stand out on the bright white Alpha Cellulose base, adding life to colours and creating contrast. The **deep blacks** and wide tonal range make FB Distinction 320 a great choice for high contrast monochrome work, or colour images that would benefit from an enhanced base tint to really stand out and create impact.

Perfect for achieving images with excellent detail and a great deal of shadow depth, substantial image density, an extensive colour gamut range or unsurpassable black and white with tremendous Dmax.

	CODE	SIZE	PACK
Sheets	APJ64213	A4	25
	APJ64223	A3	25
	APJ64233	A3+	25
	APJ64243	A2	25
Rolls	APJ64258	17" Roll	15mtr
	APJ64268	24" Roll	15mtr
	APJ64288	44" Roll	15mtr

WHY NOT TRY... TEST PACK 2: FIBRE BASED BARYTA

This Test Pack offers the full choice of our Fibre based (Baryta) inkjet range, helping you choose the right paper for your images.

CODE	SIZE	SHEETS OF EACH	TOTAL SHEETS
APJ20047	A4	2	10



SMOOTH & TEXTURED FINE ART

MUSEUM QUALITY, GICLÉE MEDIA

PermaJet's **flagship range** of smooth and textured fine art paper demonstrates **exceptional qualities** that are only achieved when working with the finest natural base materials: cotton and alpha-cellulose.

These fine art papers are **Giclée quality**. The materials are refined to be **acid-free** and **lignin-free** to ensure and prolong **archival stability**.

Guaranteed by the **Fine Art Trade Guild's ArtSure™** certification scheme. All our Fine Art papers carry a **certificate of archival stability** awarded by UKAS approved laboratories.



PermaJet Fine Art media is certified in the Art Sure™ scheme, guaranteeing print longevity and archival properties of each media type.

SMOOTH FINE ART

PORTRAIT WHITE 285

Image Nicki Gwynn-Jones



Acid FREE!

100% Cotton

AQ



Portrait White 285 is a fine art inkjet paper with a **subtle textured matt surface** and **bright white base**. It replicates colours beautifully, elevated by the whiter base tone, whilst blacks print deep and rich. The **subtle, dimpled matt surface** complements fine art photography and artwork, adding a delightful soft texture that enhances the image. Both photographers and artists will enjoy printing their work on Portrait White 285, particularly those who produce portraits, high-key work, and illustrations.

This **100% cotton rag** material is acid free and ideal for archival standard prints.


Ideal for reproducing fine art portraiture. If you are looking for a superb paper that has a whiter base and represents the texture of skin tones, as well as excellent highlights and shadow detail, this is the paper for you.

	CODE	SIZE	PACK
Sheets	APJ22213	A4	25
	APJ22223	A3	25
	APJ22233	A3+	25
	APJ22243	A2	25
	APJ22259	17" Roll	15mtr
Rolls	APJ22269	24" Roll	15mtr
	APJ22299	44" Roll	15mtr

SMOOTH FINE ART

PORTFOLIO RAG 220

Image Colin Trowe-Poole



Acid FREE!

100% Cotton

AQ

Portfolio Rag 220 is a fine art inkjet paper with a **smooth matt surface** and **natural, off-white base**. It replicates colours with **great depth and clarity**, the natural base tint providing an accuracy suited to fine art reproductions. The delightful smooth matt surface is perfect for portraiture and wedding photography, giving a high-quality look with no distracting elements. It has a **100% cotton rag, acid-free** base that provides an archival stability for the serious fine art worker.

Portfolio Rag 220 is the lightest weight paper in the fine art range, suited to portfolios and albums, invitations, and framed prints.

An ideal paper for a print studio or framer. This lighter weight, 100% cotton rag base is the perfect fine art paper for handling, whether you wish to use this paper to create personal portfolio work, invitation cards or simply for final digital output.

	CODE	SIZE	PACK
Sheets	APJ21613	A4	25
	APJ21623	A3	25
	APJ21633	A3+	25
	APJ21643	A2	25
	APJ21658	17" Roll	15mtr
Rolls	APJ21667	24" Roll	15mtr
	APJ21697	44" Roll	15mtr
	APJ21698	60" Roll	15mtr

SMOOTH FINE ART

PORTRAIT RAG 285

Image Tom Barnes



Acid FREE!

100% Cotton

AQ

Portrait Rag 285 is a fine art inkjet paper with a **classic matt surface** and **medium white base**. It has an **incredible Dmax** that produces deep, velvety blacks, and a wide colour gamut suited to skin tones and landscapes. The surface has a **subtle texture** that adds character and definition to fine art pieces without distracting from the subject.

Portrait Rag's **100% cotton rag** base produces **excellent tonal definition** and a wide colour gamut for high quality, accurate prints. The archival qualities make it a fine choice for photographers, artists, and galleries.


A stock product for wedding and portrait photographers thanks to its archival qualities and beautiful finish.

	CODE	SIZE	PACK
Sheets	APJ61313	A4	25
	APJ61323	A3	25
	APJ61333	A3+	25
	APJ61343	A2	25
	APJ61357	17" Roll	15mtr
Rolls	APJ61367	24" Roll	15mtr
	APJ61397	44" Roll	15mtr

SMOOTH FINE ART

OMEGA RAG 310

Image Andreea Hargreaves



Acid FREE!

100% Cotton

AQ

Omega Rag 310 is a fine art inkjet paper with a **smooth matt surface** and **neutral white base**. It prints colours to an exceptional standard with **low metamerism**, whilst its shadow detail and smooth gradation of tones make it an ideal partner for monochrome work. Highly suited to landscape and portrait photographers, this paper prints complex colours, deep blacks, and **high levels of detail** without compromise.

Omega Rag's surface has a delightful smooth finish that gives depth to images, and a **100% cotton rag** base for archival stability and outstanding quality. The heavyweight base has a great feel to hand and will make an excellent choice for fine art prints, exhibitions and more.

Suited for landscape and portraiture photographers who intend to work with high white, smooth surface.

	CODE	SIZE	PACK
Sheets	APJ21913	A4	25
	APJ21923	A3	25
	APJ21933	A3+	25
	APJ21943	A2	25
	APJ21957	17" Roll	15mtr
Rolls	APJ21967	24" Roll	15mtr
	APJ21997	44" Roll	15mtr
	APJ21998	60" Roll	15mtr

SMOOTH FINE ART

ALPHA NATURAL RAG 310



Image Wim Vanderhagen

OBA & Acid FREE!
100% Cotton
AQ

Alpha Natural Rag 310 is a fine art inkjet paper with a **smooth matt surface** and **natural white base**. Easily produce beautiful Giclée results with this **OBA free paper**, the perfect choice for artists and photographers looking for a true archival fine art material. It reproduces stunning, vibrant colours and great image depth and detail. The warm **100% cotton** base provides a stable platform for fine art reproductions with no colour shifts or enhancements.

Alpha Natural Rag is highly suited to landscape, portrait and fine art photographers and artists who desire a very smooth surface.

Highly suited to landscape and portrait photographers who intend to work with a rigid, warmer base material with a very smooth surface. Re-creating complex colours and perfect deep blacks are great reasons to use this paper.

	CODE	SIZE	PACK
Sheets	APJ21813	A4	25
	APJ21823	A3	25
	APJ21833	A3+	25
	APJ21843	A2	25

	CODE	SIZE	PACK
Rolls	APJ21857	17" Roll	15mtr
	APJ21867	24" Roll	15mtr
	APJ21897	44" Roll	15mtr
	APJ21898	60" Roll	15mtr

SMOOTH FINE ART

PHOTO ART SILK 290



Image Sue Brown

Acid FREE!
AQ

Photo Art Silk 290 is a fine art inkjet paper with a **silk matt surface** and **mid-white base**. This matt paper has a **unique coating** that takes on a **luxurious silk sheen** when printed on, sparkling in the light and bursting with vibrancy. This makes it the perfect paper for seascapes and long-exposure landscape photographs, enhancing the results and adding a magical quality.

Photo Art Silk is an art paper with a difference and will create stand-out prints suited for all purposes, from wall art to Camera Club competition entries. The surface has a **subtle undulating texture** for a true fine art feel, whilst the natural white Alpha Cellulose base delivers excellent colour renditions and sharp detail.

Are you a photographer requiring a smooth art paper that delivers a little extra sparkle? Create stand-out prints with the help of this paper's unique finish. If you are after an art paper with a difference then this is for you.

	CODE	SIZE	PACK
Sheets	APJ62513	A4	25
	APJ62523	A3	25
	APJ62533	A3+	25
	APJ62543	A2	25

	CODE	SIZE	PACK
Rolls	APJ62557	17" Roll	15mtr
	APJ62567	24" Roll	15mtr
	APJ62597	44" Roll	15mtr

TEXTURED FINE ART

ARTIST WATERCOLOUR 250



OBA & Acid FREE!
Acid FREE!
AQ

Artist Watercolour 250 is a fine art inkjet paper with a **heavily textured surface** and **natural white base**. This **OBA free** paper is reminiscent of traditional watercolour materials, with a **prominent woven texture** that gives a superb realistic effect when reproducing art or fine art photographs. The natural white base of this Alpha Cellulose paper has an **exceptional colour gamut and sharpness**, ensuring your work prints at its very best.

A wonderfully textured watercolour paper for any artist wishing to reproduce realistic artworks and drawings in a digital format.

	CODE	SIZE	PACK
Sheets	APJ60113	A4	25
	APJ60123	A3	25
	APJ60133	A3+	25
	APJ60143	A2	25

	CODE	SIZE	PACK
Rolls	APJ60157	17" Roll	15mtrs
	APJ60167	24" Roll	15mtrs
	APJ60197	44" Roll	15mtrs

TEXTURED FINE ART

GALLERY ETCHING 310



Acid FREE!
AQ

Gallery Etching 310 is a fine art inkjet paper with a **heavily textured surface** and **natural white base**. The undulated texture particularly suits artist reproductions, mimicking the raised qualities of oil paint for an almost 3D look. It also provides a delightful quality and depth to photographs that would benefit from an added texture. Gallery Etching 310 has an acid-free **Alpha Cellulose base** and an impressive scuff-resistant coating, with archival qualities that meet gallery standards.

This is the ideal paper for those wanting to reproduce artwork and fine art photographs with a beautiful texture and feel.

	CODE	SIZE	PACK
Sheets	APJ60313	A4	25
	APJ60323	A3	25
	APJ60333	A3+	25
	APJ60343	A2	25

	CODE	SIZE	PACK
Rolls	APJ60357	17" Roll	15mtrs
	APJ60367	24" Roll	15mtrs
	APJ60397	44" Roll	15mtrs

WHY NOT TRY... TEST PACK 3: FINE ART

Discover the entire Smooth and Textured Fine Art ranges in one comprehensive Test Pack.

CODE	SIZE	SHEETS OF EACH	TOTAL SHEETS
APJ20053	A4	2	18





NEW! HERITAGE RANGE

PRINTS THAT WILL BE PASSED DOWN
FROM GENERATION TO GENERATION

14

Create your **masterpieces** on PermaJet's Heritage Range. A quartet of new papers join our **flagship** textured fine art paper, Museum Heritage 310.

The new papers are **100% cotton, OBA-free and archival**, making them ideal for any fine art project requiring the highest grades of archivability and longevity.

Choose from **5 distinctive surfaces** – each one designed with a specialist finish to honour and define your creative work, all with the **highest quality** print results.

MUSEUM HERITAGE 310



Museum Heritage 310 is a fine art inkjet paper with a **textured surface** and **mid-white base**. It prints with outstanding detail and clarity, enhanced by the **rough textured weave** that is highly suited to fine art photography, rustic scenes, and detailed portraits. This **cotton and Alpha Cellulose mix** paper is perfect for artists wishing to reproduce their work, with the mid-white base providing outstanding colour and monochrome renditions.

Museum Heritage has a superior coating that prints excellent highlight and shadow detail with a **high Dmax**. The textured surface adds a depth and quality to images for that extra special look and feel, suited to professional exhibitions, galleries, museums, and artists.

Museum Heritage has a wonderful **subtle texture ideal for galleries and photographers who intend to create fine art prints with a high degree of detail and texture.**

	CODE	SIZE	PACK
Sheets	APJ60213	A4	25
	APJ60223	A3	25
	APJ60233	A3+	25
	APJ60243	A2	25
Rolls	APJ60257	17" Roll	15mtrs
	APJ60267	24" Roll	15mtrs
	APJ60297	44" Roll	15mtrs

BARYTA RAG 310



Baryta Rag 310 is a fine art inkjet paper with an exquisite **satin surface** and a **natural white base**. The satin surface glistens in the light, adding a luxurious finish that will accentuate any photographic image. Prints radiate quality, reproducing detail and colour range with finesse. Perfect for a wide range of images from high-contrast portraits to fine art landscapes. This incredible cotton baryta offers printmakers **remarkable colour tones and deep blacks**.

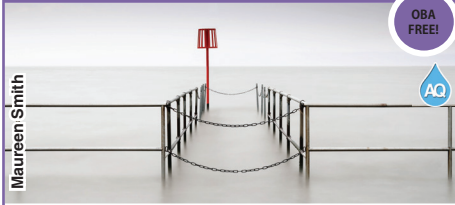
The **OBA free 100% cotton rag base** offers archival stability for long-lasting results. This 310gsm paper has a great feel to hand and will make an excellent choice for fine art prints, exhibitions and more.

A 100% cotton, OBA Free Satin Baryta with a natural white base.

	CODE	SIZE	PACK
Sheets	APJ65013	A4	25
	APJ65023	A3	25
	APJ65033	A3+	25
	APJ65043	A2	25

	CODE	SIZE	PACK
Rolls	APJ65067	24" Roll	15mtrs
	APJ65077	36" Roll	15mtrs
	APJ65097	44" Roll	15mtrs
	APJ65098	60" Roll	15mtrs

SMOOTH RAG 310



Maureen Smith



Smooth Rag 310 is a fine art inkjet paper with a sensationally **smooth matt surface** and **natural white base**. Create extraordinary prints to the highest industry standards, with exceptional shadow detail and **smooth tonal gradation** highly suited to monochrome work. Smooth Rag prints with complex detail and deep blacks, whilst the smooth finish adds exceptional depth to prints.

The **OBA free 100% cotton rag base** offers archival stability for long-lasting results. This 310gsm paper has a great feel to hand and will make an excellent choice for fine art prints, exhibitions and more.

A 100% cotton, OBA Free smooth surface with a natural white base.

	CODE	SIZE	PACK
Sheets	APJ65413	A4	25
	APJ65423	A3	25
	APJ65433	A3+	25
	APJ65443	A2	25

	CODE	SIZE	PACK
Rolls	APJ65467	24" Roll	15mtrs
	APJ65477	36" Roll	15mtrs
	APJ65497	44" Roll	15mtrs
	APJ65498	60" Roll	15mtrs

ETCHING RAG 310



Etching Rag 310 is a fine art inkjet paper with a **roughly textured surface** and **natural white base**. The traditional texture adds an impressive depth to images for outstanding photographic and art reproductions. Produce remarkable prints with deep blacks, high contrast and wide tonal range.

The **OBA free 100% cotton rag base** offers archival stability for long-lasting results. This 310gsm paper has a great feel to hand and will make an excellent choice for fine art prints, exhibitions and more.

A 100% cotton, OBA Free rough textured surface with a natural white base.

	CODE	SIZE	PACK
Sheets	APJ65613	A4	25
	APJ65623	A3	25
	APJ65633	A3+	25
	APJ65643	A2	25

	CODE	SIZE	PACK
Rolls	APJ65657	17" Roll	15mtrs
	APJ65667	24" Roll	15mtrs
	APJ65677	36" Roll	15mtrs
	APJ65697	44" Roll	15mtrs
	APJ65698	60" Roll	15mtrs

WATERCOLOUR RAG 310



Watercolour Rag 310 is a fine art inkjet paper with an **exquisite textured surface** and **natural white base**. Prints exude quality with **pin-sharp detail** and high colour consistency, whilst the watercolour style texture adds life to fine art images and traditional artwork reproductions.

The **OBA free 100% cotton rag base** offers archival stability for long-lasting results. This 310gsm paper has a great feel to hand and will make an excellent choice for fine art prints, exhibitions and more.

A 100% cotton, OBA Free textured surface with a natural white base.

	CODE	SIZE	PACK
Sheets	APJ65213	A4	25
	APJ65223	A3	25
	APJ65233	A3+	25
	APJ65243	A2	25

	CODE	SIZE	PACK
Rolls	APJ65267	24" Roll	15mtrs
	APJ65277	36" Roll	15mtrs
	APJ65297	44" Roll	15mtrs
	APJ65298	60" Roll	15mtrs

WHY NOT TRY... HERITAGE DISCOVERY PACK

Test out the whole Heritage range in one comprehensive sample pack.

CODE	SIZE	SHEETS OF EACH	TOTAL SHEETS
APJ20090	A4	2	10



DOUBLE-SIDED MEDIA

These **double-sided** surfaces are unique in look, feel and texture, having been manufactured using the most **advanced** traditional processes.

All PermaJet double-sided media is compatible with both **dye and pigment** based inks, providing beautiful, neutral colours and outstanding **image sharpness**.

Perfect for projects where print is required on both sides of the media with **no bleed or show-through**, from books to photographic albums.

DS MATT 250



DS Matt 250 is a **double-sided** inkjet paper with a **matt surface** and **bright white base**. The surface is velvety smooth for a sumptuous feel, printing with fantastic image sharpness and detail. Colours are crisp and vibrant on the ultra-white base, whilst the wide tonal range makes it an excellent choice for monochrome images.

A cost-effective Alpha Cellulose paper for monochrome workers, graphic designers, and card makers where a double-sided matt paper is required.

	CODE	SIZE	PACK
Sheets	APJ24115	A4	100
	APJ24125	A3	50
	APJ24135	A3+	50
	APJ24145	A2	50

DS OYSTER 285



DS Oyster 285 is a **double-sided** inkjet paper with a **subtle pearl surface** and **bright white base**. It has a beautifully delicate surface that enhances prints without distracting from the subject, making it a strong favourite amongst photographers and artists alike. The bright white base adds contrast and lifts colours, with an excellent tonal range and Dmax.

Create portfolios, calendars, graphical presentations, cards and books with well saturated and smooth colours. Producing high contrast and detailed shadow areas, this is an excellent choice for the professional printer.

	CODE	SIZE	PACK
Sheets	APJ51212	A4	25
	APJ51218	A4	250
	APJ51222	A3	25
	APJ51228	A3	125
	APJ51232	A3+	25
	APJ51238	A3+	125

DS PORTFOLIO 230



DS Portfolio 230 is a **double-sided** inkjet paper with a **fine art matt surface** and **off-white base**. This paper prints with stunning clarity enhanced by the lovely, softly textured surface. Its natural white base is made from acid-free 100% cotton rag, replicating colours with great accuracy and depth suited to fine art photography and illustrations, whilst ensuring that your work will last for years to come.

This paper is perfect for outputs that are regularly exposed to handling and viewing. A Fine Art paper that is ideal for albums or books.

	CODE	SIZE	PACK
Sheets	APJ21713	A4	25
	APJ21723	A3	25
	APJ21733	A3+	25
	APJ21743	A2	25

DS LUSTRE 295



DS Lustre 295 is a **double-sided** inkjet paper with a **lustre surface** and **bright white base**. The advanced coating prints stunning vivid colours with an incredible Dmax, excellent for bright colour photography and striking monochromes. The luxurious lustre surface makes it an excellent choice for commercial portfolios, studio photography, and graphic design work.

Ideal for album applications, portfolios, point of sale, calendars and project-based applications where vivid colours and high contrast are required.

	CODE	SIZE	PACK
Sheets	APJ61412	A4	25
	APJ61418	A4	250
	APJ61422	A3	25
	APJ61428	A3	125
	APJ61432	A3+	25
	APJ61438	A3+	125
	APJ61442	A2	25



FREE TEMPLATES & PROFILES
 Visit our website to download editable templates and ICC profiles!

GREETING CARDS & POSTCARDS

Be part of the crafting market with the brilliant PermaJet inkjet Greetings Card and Postcard range which can be printed through any standard inkjet printer.

Developed using PermaJet's quality inkjet media, it's easy to reproduce and sell your images or artwork at a premium price. The card has been coated with a high quality ink receiving layer which works well with dye or pigment based inks. The reverse side can also be printed on for textual purposes with personalised messages and greetings, with no ink bleed.

GREETING CARDS

Printing your own Greeting Cards is easy with our pre-created media available in 4 different finishes.

Gloss - 300gsm bright white, smooth gloss finish

Matt - 270gsm smooth matt surface

Silk - 290gsm fine art matt with a unique silk finish

Textured - 310gsm subtly textured fine art media

All options are supplied pre-created in their centres with a reverse/internal matt surface, designed to allow you to print text or write directly onto with your personal message.

Comes complete with white envelopes and clear self adhesive presentation bags for that finishing touch.

Choose from: A4 pre-scored, to make A5 cards or A5 pre-scored, to make A6 cards.

CODE	FORMAT
APJ24500	A5 Greeting Card- Matt /Matt 25 (with Envelopes)
APJ24502	A6 Greeting Card- Matt /Matt 50 (with Envelopes)
APJ24504	A5 Greeting Card- Gloss /Matt 25 (with Envelopes)
APJ24506	A6 Greeting Card- Gloss /Matt 50 (with Envelopes)
APJ24508	A5 Greeting Card- Silk /Matt 25 (with Envelopes)
APJ24510	A6 Greeting Card- Silk /Matt 50 (with Envelopes)
APJ24512	A5 Greeting Card- Text /Matt 25 (with Envelopes)
APJ24514	A6 Greeting Card- Text /Matt 50 (with Envelopes)



BULK DISCOUNTS AVAILABLE!

POSTCARDS

PermaJet Postcards are a fantastic way to print your own images and artwork to send to friends, family, colleague's and customers.

They have a high quality smooth gloss 300gsm front, with a back-printed postcard format on the reverse side, ready to hand write directly onto or overprint. Available in a true 6" x 4" (152.4mm x 101.6mm) format.



CODE	FORMAT	PACK
APJ24520	6" x 4" PostCards - Gloss (backprinted with template)	25

PRESENTATION SLEEVES



The translucent Postcard Presentation Sleeves are perfect for artists or photographers that are looking to sell their reproductions or photographs, allowing handling of the cards without annoying fingerprints or marks whilst adding extra value to your work.

CODE	SLEEVE SIZE	PACK
APJ24525	6" x 4" Presentation Sleeves	25
APJ24530	Postcards & Sleeves Pack	25

FINE ART CANVAS

A RANGE OF INKJET CANVAS THAT IS OUT OF THIS WORLD

This **exceptional** dual range of inkjet canvases has been manufactured using the most **advanced** base materials and inkjet coatings, applied with **multi-layer technology**.

Artists and photographers appreciate and value the **unique** look, feel, texture and **durability** of PermaJet's digital canvases, suiting those seeking the **highest quality** results.

The **fine art** and **production** groups of inkjet canvases have been specially produced with the end user in mind, considering the key requirements for each market.

NEPTUNE NATURAL MATT 400



Neptune Natural Matt Canvas is a 400gsm inkjet canvas with a **textured matt surface** and **natural warm base**. This **100% cotton canvas** suits both colour and monochrome images which print beautifully on the ivory surface, with **sharp detail and wide tonal range**. The ink-receiving coating is tough and water resistant, and is highly suitable for those printing watercolours, paintings, wildlife or artistic impressions.

Neptune's real canvas structure base has been manufactured with random and uneven cotton fabric, making it perfect for anyone looking for a non-consistent canvas finish with a natural and varied appearance.

Excellent for vibrant colours and monochrome images, emulating paintings or artistic images in a digital format. The uneven heavyweight textured base is flexible and non-cracking, ideal for boxed frame canvases.

CODE	SIZE	PACK
APJ23231	A3+	10
APJ23268	24" Roll	12mtrs
APJ23288	44" Roll	12mtrs
APJ23288	60" Roll	12mtrs

SATURN SEMI-GLOSS 350



Saturn Semi-Gloss Canvas is a 350gsm inkjet canvas with a **semi-gloss surface** and **natural white base**. The surface is **subtly textured**, adding extra depth and definition to fine art photographs and artwork, whilst reproducing fantastic colours and detail thanks to the stunning gloss finish. Saturn's 65/35 polyester/cotton base provides a wonderful tonal range for fantastic reproductions of both colour and monochrome images.

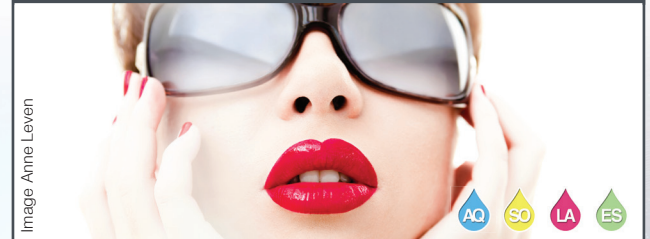
The instant dry coating and highly flexible base makes it ideal for creating traditional stretched canvas prints for artists, fine art labs, photographers and more.



This product is **100% OBA FREE** and meets with the standards of the Fine Art Trade Guild **Art Sure™** guidelines, suitable for museums and fine art workers who are in need of a neutral base canvas free of optical brighteners.

CODE	SIZE	PACK
APJ23331	A3+	10
APJ23368	24" Roll	12mtrs
APJ23388	44" Roll	12mtrs

MERCURY ULTRA WHITE MATT 405



Mercury Ultra White Matt Canvas is a 405gsm inkjet canvas with a **smooth matt surface** and **bright white base**. It's carefully designed to suit the reproduction of fine art work, particularly where excellent image detail and accurate colour replication is crucial. The delightfully smooth surface prints photographs and artwork with **great clarity**, whilst the brilliant white base gives depth and contrast to help lift the image off the media and add impact. Mercury has a 65/35 polyester/cotton blend making it highly flexible and resistant to cracking.

If you are after an ultra bright white based media with a true canvas structure to create fine art reproductions, paintings or murals in a digital format, this matt canvas is perfect for your application. The non-cracking base will enable the canvas to flex perfectly around stretcher bars, creating a modern or contemporary boxed frame.

CODE	SIZE	PACK
APJ24331	A3+	10
APJ24368	24" Roll	15mtrs
APJ24378	36" Roll	15mtrs
APJ24388	44" Roll	15mtrs
APJ24398	60" Roll	15mtrs

PRODUCTION CANVAS

INKJET CANVAS SUITED TO PRODUCTION LEVEL OUTPUT

P3 MATT 380



P3 Matt canvas has a highly water resistant 380gsm base made from a 80/20 Polyester/Cotton blend. The **bright white**, fine textured matt surface gives it a wide tonal range, large colour gamut, **ultra image sharpness** and a high Dmax rating ensuring it works well for both colour and monochrome reproductions.

P3 offers its users a material which truly resembles the look, feel and print quality of an artist's stretched canvas where higher volume printing output is required.

CODE	SIZE	LENGTH
APJ24668	24" Roll	18 mtr
APJ24678	36" Roll	18 mtr
APJ24688	44" Roll	18 mtr
APJ24698	60" Roll	18 mtr



P4 COTTON MATT 360



This 100% cotton canvas has a subtly textured **natural white** matt surface with excellent tonal range. Exceptional for **fine art Giclée reproductions** with long term archival stability and high quality results.

This natural white, 100% cotton canvas media has a wide colour gamut which creates a fantastic tonal range across both full colour and monochrome images.

CODE	SIZE	PACK/LENGTH
APJ25131	A3+	10
APJ25158	17" Roll	18 mtr
APJ25168	24" Roll	18 mtr
APJ25178	36" Roll	18 mtr
APJ25188	44" Roll	18 mtr

P5 BRIGHT WHITE 350



The **bright white, textured matt** surface gives P5 a super-wide tonal range, very large colour gamut, **ultra image sharpness** and a high Dmax rating.

The 350gsm base is highly water resistant and made from a cotton rich polycotton blend of 10% polyester and 90% cotton. This unusual mix offers many advantages when being stretched and is guaranteed to be free of cotton husks or impurities.

Images jump off the surface thanks to the bright white base, lifting detail and making colours pop.

CODE	SIZE	LENGTH
APJ25268	24" Roll	18 mtr
APJ25278	36" Roll	18 mtr
APJ25288	44" Roll	18 mtr
APJ25298	60" Roll	25 mtr

WHY NOT TRY... TEST PACK 5: CANVAS

Try out the whole Fine Art and Production canvas range with this Test Pack.

CODE	SIZE	SHEETS OF EACH	TOTAL SHEETS
APJ20032	A3+	2	12



We recommend using one of the PermaPROtect range of varnishes to increase image density and archival resistance.

All of our varnishes have been independently tested and approved by an industry leading laboratory within the UK. They established that our varnishes will not discolour or change at all for 85+ years. See the next page for more information.

CANVAS VARNISH & KITS

PERMAPROTECT VARNISHES

Increase density and archival resistance with the PermaPROtect canvas varnishes. All of our varnishes have been independently tested and approved by an industry leading laboratory within the UK.



- Touch dry in less than 20 minutes
- Outstanding water resistance
- Increased colour saturation and Dmax
- Guaranteed UV protection
- Available in Gloss, Satin or Matt
- Spray gun compatible with 10% dilution

CODE	FINISH	VOLUME
APJ29009	GLOSS	250ml
APJ29012	GLOSS	1L
APJ29013	GLOSS	2L
APJ29025	GLOSS	10L
APJ29014	SATIN	250ml
APJ29017	SATIN	1L
APJ29018	SATIN	2L
APJ29026	SATIN	10L
APJ29019	MATT	250ml
APJ29022	MATT	1L
APJ29023	MATT	2L
APJ29027	MATT	10L
APJ29040	Roller, Foam & Tray Kit 6" (150mm)	
APJ29041	Replacement Roller Foams 6 Pack	

CANVAS STARTER KITS

Inkjet printing has evolved over the years and printing onto canvases has become more popular than ever before. This unique kit is specifically aimed at the artist and/or photographer who wants to experiment with canvas printing and have all the tools to hand in one kit.

As well as the tools and materials, a step-by-step concise document 'How to Stretch Canvases' is also included. You will be able to produce five 12" x 8" complete canvas wraps in a traditional or contemporary style. Further materials can be purchased to make more canvases as required.

In each kit you will receive:

- 2 x PermaJet Canvas Loading Sheets
- 1 x Canvas Stapling Gun
- 1 x Canvas Stretcher Pliers
- 500 x 10mm Canvas Staples
- 10 x 8" Sure-Fit Bars
- 10 x 12" Sure-Fit Bars
- 5 x A3+ Neptune Natural Matt Canvas/Saturn Semi-Gloss 12" x 18" sheets
- 1 x Canvas Information Leaflet



CODE	CANVAS	PACK
APJ23800	Neptune Matt 400	Kit to make 5 Canvases

100% cotton

CODE	CANVAS	PACK
APJ23802	Saturn Semi-Gloss 350	Kit to make 5 Canvases

OBA FREE!

PROTECTIVE PRINTER COVERS & GLOVES

PROTECTIVE PRINTER COVER



Protect your printer from dust and spillages when it's not in use with our range of robust and waterproof PermaJet Printer Covers, designed for the A3+ & A2 range of Canon and Epson Desktop Photo Inkjet Printers.

After investing in such an expensive piece of equipment, keeping it in a good condition should be a priority. Shield your printer from everyday dirt, dust, pollutants and accidents to ensure it remains in perfect condition ready for your next print job.

The grey cover is made of tough polypropylene fabric – a flexible material which has been precision manufactured to slide easily over your printer whilst not in use. Water and dust proofing assures you of a longer lasting piece of equipment.

If your printer is not listed below, please check your dimensions and find the closest fit.

CODE	PRODUCT	DIMENSIONS
APJ55350	Printer Cover for Epson SC-P600/R3000	62cm (width) x 38cm (depth) x 21.5cm (height)
APJ55352	Printer Cover for Epson SC-P800 or Canon PRO-10S/100S	68cm (width) x 36cm (depth) x 24.5cm (height)
APJ55354	Printer Cover for Canon PRO-1000	73cm (width) x 43cm (depth) x 27.5cm (height)
APJ55360	Printer Cover for Epson SC-P700	54cm (width) x 38cm (depth) x 18.5cm (height)
APJ55362	Printer Cover for Epson SC-P900/Canon PRO-200/PRO-300	64cm (width) x 38cm (depth) x 20cm (height)

COTTON GLOVES



Ideal for the careful handling of delicate fine art papers.

CODE	PRODUCT
APJ55356	Cotton Gloves (1 pair)
APJ55358	Cotton Gloves (3 pairs)

The Knowledge Vol 1: The Art of Paper Selection

Do you struggle to decide which paper to print your images on? Overwhelmed by the amount of choices in the PermaJet range? We have the answer!

The Knowledge is a digital e-book that provides a comprehensive overview of the ins and outs of inkjet paper. You can explore the basics, from how each paper looks, right through to the technical details. Learn what suits each paper type and when you might use it for your own work.

With The Knowledge, you'll gain the confidence to choose the right paper for you.

Download it now from www.permajet.com/the_knowledge or scan the QR code



SCAN ME





ENJOY UNPARALLELED IMAGE QUALITY

We understand how Canon printers can benefit you and ensure you achieve fantastic results at home or commercially. If you have any queries about the Canon range of printers and which is best for you, speak to our sales team on 01789 739200.

We now offer **desktop and wide format** printing solutions from the **Canon Pixma and ImagePROGRAF LFP** range, guaranteeing printing excellence and professional quality with every print you make.

The Canon Photo Printer range combines **industry-leading** colour reproduction with **fast print speeds** and ease of use, bringing **immeasurable benefits** to your home-printing setup.

Find the perfect printer to **suit your needs** from a selection of 6 to 12 ink models, ranging from **entry level to professional standard** - all producing outstanding quality prints.

Dye vs pigment - which is right for me?

Dye based ink

- Made from liquid dye that gets absorbed into the paper fibres
- Potential to resist fading for 25 to 30 years
- More saturated colours, greater brightness and colour range with denser blacks
- Lower costs
- Susceptible to smudging and fading
- More suited to gloss surfaces

Perfect for...

- Smaller budgets
- Prints where longevity is not important

Pigment based ink

- Made from solid pigment particles that sit on the paper and bond with the fibres
- Resistant to external influences such as water, environmental gases and UV rays
- Higher colour stability and print longevity with the potential to resist fading for up to 200 years

Perfect for...

- Archival fine art and professional printing
- Prints that will see a lot of handling or sunlight

CANON PIXMA IP8750

6 colour dye A3+ printer



Print stunning quality photos up to an impressive professional print size of A3+ with this excellently priced premium printer - the cheapest A3+ printer on the market!

The six colour dye based ink cartridges include a grey ink that enables you to create richer colour photos; while FINE printhead technology delivers up to 9600dpi resolution giving you exceptional detail and photo-quality results at speed.

The PIXMA iP8750 is ideal for photo enthusiasts and small studios who need to print high quality images with shorter term display in mind.

Key features:

- Print up to A3+ size (329x483mm)
- Wi-Fi connectivity & tablet and smartphone ready
- 6 ink tanks, includes a grey ink for exceptional colour and mono prints
- ISO ESAT 14.5 ipm mono / 10.4 ipm colour print speed
- 10 x 15cm borderless photos in approx. 36 seconds
- 7ml ink cartridges

6 colour: PGBK/BK/C/M/Y/GY

CODE	PRINTER
ACANIP8750	Canon PIXMA iP8750

CANON PIXMA PRO-200

8 colour dye A3+ printer



The PIXMA PRO-200 Printer is the ideal choice to bring your photos and designs to life in vibrant colour. With an 8-colour dye-based ink system, this versatile A3+ printer is designed to meet the demands of photographers and graphic artists alike. It offers beautiful print quality, high-speed printing, and outstanding productivity in a compact footprint, allowing you to consistently produce the results your work deserves.

The Chromalife ink system produces vibrant colour images on a wide range of media. The dye formulation is resistant to fading, allowing you to print professional quality images that you can put in an album or on display. Expect exceptional detail and photo-quality results at high speed. The ideal photo printer for the serious home user.

Key features:

- Print up to A3+ size (329 x 483mm)
- USB, Network and WiFi connectivity for flexible setup options
- Print onto gloss, matt and fine art papers up to 380gsm
- Replaces the Canon PRO-100s
- 12.6ml ink cartridges

8 colour: BK/GY/LGY/C/M/Y/PC/PM

CODE	PRINTER
ACANPRO200	Canon PIXMA PRO-200

CANON IPF PRO-300

10 colour pigment A3+ printer



Take your printing to a brand new level with the PRO-300, a beautifully compact professional A3+ printer that has all the advantages and qualities of the imagePROGRAF PRO professional range, rewarding you with rich, vibrant and exquisite gallery quality prints. A series of newly introduced features make this printer hard to beat in all aspects of quality, price and performance.

The 10-ink pigment-based system enables you to produce prints onto a variety of media finishes including gloss, matt and fine art papers that are resistant to fading and ideal for display or archival purposes. This printer is optimised for fine art Giclée printing with its newly introduced Baryta paper options and borderless feed tray for any print size, plus the improved Matte Black ink that prints deeper blacks than ever before.

Key features:

- Print up to A3+ size (329 x 483mm)
- Borderless printing in all print modes
- Nozzle Misfire Detection switches to backup nozzles to avoid banding
- Paper Skew Correction detects skewing and corrects it
- Includes Chroma Optimiser for enhanced photo quality
- Replaces the Canon PRO-100s
- 14.4ml ink cartridges

10 colour: PBK/MBK/GY/C/M/Y/PC/PM/R/CO

CODE	PRINTER
ACANPRO300	Canon PIXMA PRO-300

CANON IPF PRO-1000

12 colour pigment A2 printer



Print stunning quality photos up to an impressive professional print size of A2 with this excellent photo printer!

Small enough for home studios, schools and small design environments, the Canon PRO-1000 is a welcome addition to the Canon PRO-series professional range, offering exceptional print quality using its 12 colour LUCIA PRO ink system yielding a super high level of colour, sharpness, detail and expanded colour gamut. Monochrome printing is enhanced by the Matte Black, Black, Gray & Photo Gray inks offering superior grayscales and increased black density.

The PRO-1000 inherits the Canon OES Red Line design synonymous with quality. Like the rest of the PRO-series LFP range, expect faster printing with more accuracy than ever before as well as reliability from the same ink colour set and printhead.

Key features:

- Up to A2 (420x594mm) 17" inch photographic printer
- Media max thickness 0.7mm
- Chroma-optimiser for enhanced photographic quality
- 2400 x 1200 dpi print resolution
- Outstanding cost per print
- 80ml ink cartridges

12 colour: MBK/PBK/C/M/Y/PC/PM/GY/PGY/R/B/CO

CODE	PRINTER
ACANIPF1000	Canon imagePROGRAF PRO-1000

CANON LARGE FORMAT PRO RANGE

WELCOME TO THE WORLD OF 3RD GENERATION 12 INK PRINTING

Create today's outstanding photo reproductions and tomorrow's gallery showpieces with Canon's range of specialist large format printers ranging up to 60".

Bring the world to life with glorious colour expression and exceptional quality for the finest of borderless fine art prints. The 12-colour imagePROGRAF PRO series delivers the print quality you dream of across photos and graphic art images.

As a **Canon Silver Partner**, we can offer you full support - from choosing the right printer for your needs to providing technical support following installation.



Canon

**SILVER
PARTNER**

12 ink fine art printers

CANON PRO-2100

Dual Roll Holder
option available



A **24-inch** device delivering high-quality printing for the graphic, fine art, and print-for-pay-markets, in a compact size.

- Comes with starter 160ml ink set
- 12 ink: BK/MBK/C/M/Y/PC/PM/G/PG/R/B/CO

CODE	PRINTER
ACANIPF2100	Canon PROGRAF PRO-2100

CANON PRO-4100

Dual Roll Holder
option available



A **44-inch** device for print service providers in the photographic and fine art markets.

- Comes with starter 330ml ink set
- 12 ink: BK/MBK/C/M/Y/PC/PM/G/PG/R/B/CO

CODE	PRINTER
ACANIPF4100	Canon PROGRAF PRO-4100

CANON PRO-6100



A **60-inch** device offering supreme print quality and the highest performance levels.

- Comes with starter 330ml ink set
- Comes with a dual roll holder
- 12 ink: BK/MBK/C/M/Y/PC/PM/G/PG/R/B/CO

CODE	PRINTER
ACANIPF6100	Canon PROGRAF PRO-6100

Take advantage of the following features and instantly boost your print productivity:

12-COLOUR LUCIA PRO PIGMENT INK

The LUCIA PRO pigment ink delivers a wide colour gamut and enhanced gradation for incredible image clarity. Colours are richer and blacks are deeper, producing striking graphic and fine art prints that are faithful to your images. The Chroma Optimiser levels ink droplet heights to enhance glossiness and flatten the print surface - as well as controlling the reflected light for faithful expression of the original colours.

SAVE INK COSTS

Remaining media estimation prevents wasted ink by telling you exactly how much media you have left, ensuring there are no unwanted printing surprises. Hot Swap ink tanks enable you to change tanks whilst printing for unimpacted productivity.

PROFESSIONAL PRINT & LAYOUT SOFTWARE

Intuitively control pre-print settings on-screen for precision output. Enables soft proofing, layout functions and drag and drop automated nesting.

CONTROL COSTS & ENHANCE PRODUCTIVITY

With Canon accountancy software you can track your costs at all times. Fine tune your prints with the media creation tool and Canon's unique AM1X files.

AUTOMATIC MEDIA HANDLING

Simply place the roll on the feeder and it loads automatically. A sensor detects the media, matches it with an internal database and automatically selects the media type for a streamlined user experience.

WORK SMARTER

Take advantage of hard keys and saved on-screen settings for frequently used operations and routine print tasks on an individual level. Print various-sized borderless images from one roll size, with an advanced sensor detecting the edges and automatically adjusting the margins for unbeatable accuracy.

ADVANCED IMAGE PROCESSING

Accurately expresses colours, improves gradation and increases sharpness with guaranteed colour consistency between jobs and different production sites.

SECURE PRINT DATA

Data is protected by enhanced user and device security, restricting print connections and protocols with individual user passcodes.

Speak to our sales team on 01789 739200 for pricing and further information on how to elevate your print business with Canon. Ask about our delivery and installation packages.



PHENOMENAL 3D ART SCANNERS

Sensational 3D colour managed scanning has never been more accessible than with the incredible WideTEK range. We offer a full suite of CCD 3D scanners crafted with German precision engineering and supported by our outstanding UK service.



Reproduce artwork capturing the full detail with all the textures of the original piece thanks to the 3D scanning mode



Ideal for scanning works of fine art like oil and acrylic paintings, watercolors, charcoal and pastel drawings, mixed media collages



An additional backlit option is available for scanning transparent materials like glass negatives, 35mm microfilm aperture cards, sepias and film

The revolutionary 3D scanning mode captures the texture of surfaces so perfectly that the scan on a screen looks like the real thing. This is ideal for reproducing artists original work to the highest quality possible.

The scanners have dual CCD technology for pin-point accuracy. With their new diffusers, the LED lamps produce an extremely homogeneous illumination which eliminates all unwanted shadows caused by folds, wrinkles and other distortions of the scanned object.

A normal scan in 2D mode



The same scan in 3D mode



Call our sales team to find out more about this marvellous opportunity to offer new revenue streams to your business or dramatically increase your scanning capabilities.

WIDETEK 12 FLATBED SCANNER



The WideTEK® 12 is an A3+ scanner capable of delivering high optical resolution 3D images for Fine Art and Photographic reproductions.

Key features:

- Captures 3D surfaces, textures of various materials, Braille
- 1200 x 1200 dpi scanner resolution
- Integrated 64bit Linux, Intel i3 quad core processor, 8 GB memory
- Large color WVGA touchscreen for simplified operation
- OS independent, runs with Windows 7, 8, 10, Linux, Mac
- ScanWizard uses any browser: IE, Safari, Chrome, Firefox
- Remote maintenance and troubleshooting
- Dust-free camera technology
- And more - please see the website

CODE	PRODUCT
AWIDETEK12	WideTEK® 12 scanner
AWIDETEK12BDL	WideTEK® 12 Scanner with Software Bundle
AWIDETEK12BLT	WideTEK WT12 - Backlight Lid

WIDETEK 25 FLATBED SCANNER



The WideTEK® 25 is an A2 scanner capable of delivering high optical resolution 3D images for Fine Art and Photographic reproductions.

Key features:

- Captures 3D surfaces, textures of various materials, Braille
- 1200 x 1200 dpi scanner resolution
- Integrated 64bit Linux, Intel i3 quad core processor, 8 GB memory
- Large color WVGA touchscreen for simplified operation
- OS independent, runs with Windows 7, 8, 10, Linux, Mac
- ScanWizard uses any browser: IE, Safari, Chrome, Firefox
- Remote maintenance and troubleshooting
- Dust-free camera technology
- And more - please see the website

CODE	PRODUCT
AWIDETEK25	WideTEK® 25 scanner
AWIDETEK25BDL	WideTEK® 25 Scanner with Software Bundle
AWIDETEK25BLT	WideTEK WT25 - Backlight Lid

WIDETEK 36ART SCANNER



The WideTEK® 36ART is a wide format contact free scanner for fine art reproductions at 600dpi in formats up to 36" x 60".

Key features:

- Contact-free scanning of fragile material or even wet artwork
- Scan table can be moved manually or motorised
- Large 15 inch color touchscreen for simplified operation
- Single path texture scanning, patent pending stitching
- Virus resistant Linux OS
- OS independent, runs with Windows 7, 8, 10, Linux, Mac
- ScanWizard uses any browser: IE, Safari, Chrome, Firefox
- Remote maintenance and troubleshooting
- Dust-free camera technology
- Full Coverage Warranty — Up to 5 years subscription for full coverage warranty package and free spare parts
- And more - please see the website

CODE	PRODUCT
AWIDETEK36	WideTEK® 36ART scanner
AWIDETEK36TAB	WideTEK® Table Extension 70cm
AWIDETEK36WAR	WideTEK WT36 Full Warranty

PRESENTATION, PRESERVATION & PROTECTION

After your image has been created on the very best papers, the treatment and finishing of the print is just as important as the printing itself.

PERMASEAL 400ml



A clear, water-resistant and non-yellowing UV protective spray that will add colour saturation, increase image density and improve abrasion resistance.

Suitable for all canvases, fine art papers and signage leaving a beautiful subtle sheen or higher gloss depending on what finish you desire. PermaSeal protects from dirt, ink fading, atmospheric pollutants and fingerprints as well as increasing the density of colours, particularly blacks. Always test first.

Average coverage based on two coats per A4 sheet = 25 prints

CODE	DESCRIPTION
APJ59006	PermaSeal 400ml

PERMAFIX 300ml



This is a fast-drying matt spray specifically formulated to add greater UV protection & waterproofing properties to all matt surface papers. Supplied in a handy 300ml can, several coats can be applied to add as much as 30% extra print life.

Digital images will also be more scratch and scuff-resistant following treatment with this spray. Always test first.

Average coverage based on two coats per A4 sheet = 25 prints.

CODE	DESCRIPTION
APJ59001	PermaFix 300ml

RETAC 400ml



A professional repositionable mounting spray adhesive which allows you to bond your images to mountboard without damaging the print. The glue is 100% solvent and acid-free making it really useful for repeated mounting applications such as prints, stencils, paper, film, plan layouts and much more.

ReTac can also be used to clean the feed rollers of inkjet printers by removing all fibres within the printer and allowing better paper take-up. Simply spray a heavyweight (200gsm+) paper with Retac, allow to dry (10 minutes minimum), then feed this sheet Retac side up!

Average coverage based on one coat per A4 sheet = 30 prints

CODE	DESCRIPTION
APJ59002	ReTac 400ml

PERMAAIR 400ml



PermaAir helps to keep your printer dust free, ensuring paper feed trays and rollers work effectively. Simply spray PermaAir across the printer to remove loose particles before use.

This aerosol is also highly effective at removing fibres and dust from fine art paper before loading it into the printer, avoiding wastage and providing a more efficient workflow for studio labs and photographers alike.

Use PermaAir as part of your regular printer maintenance to extend the working life of your desktop or wide format printer.

CODE	DESCRIPTION
APJ59007	PermaAir 400ml



Visit www.permajet.com for pricing and further information.



ANTI-CURL ROLLER

The Anti-Curl Roller takes that frustrating curl out of prints and posters in seconds!

This first-of-its-kind accessory provides an ingenious solution to the common curling problems associated with true fine art inkjet roll materials, costing wasted time and money to your business.



By using the Anti-Curl Roller device, you can take the curl out of inkjet prints and fine art paper without causing any surface damage or creases to the printed images.

Simply lay out the carrier film which has virtually no curl memory and lays perfectly flat time-after-time (even after having been wound tightly around the chrome-plated central roller tube).

Place your curled paper on top and gently roll across a work top or desk until fully wound around the roller tube. Once unwound again, the paper is super flat, free of any damage!

All sizes of roller can accommodate prints up to 70 inches long by their stated width.

Visit our website to see a video showing the device in action.

CODE	PRODUCT	DIAMETER	PACK
APJ29000	FineArt Anti-Curl Roller 24" (610mm) Width	38mm	1
APJ29001	FineArt Anti-Curl Roller 50" (1270mm) Width	38mm	1

CLEVERCLOGS

The Clever Clogs cleaning solution has an improved setup making it the most advanced method of removing blockages from your printer.

By using this highly concentrated and advanced formulation, you will be able to dissolve the most stubborn dried ink. The pH neutral balanced cleaning solution can be used on a range of inkjet printers, from Epson to Canon, so long as you can gain access to the print head.

See the PermaJet website for further instructions.



CODE	PRODUCT
APJ55820	CLEVERCLOGS Printer Head Kit (Fluid, Syringe & attachments)
APJ55821	CLEVERCLOGS Extra Fluid 30ml

MAGNETIC ACRYLIC BLOCKS



PermaJet's new Magnetic Acrylic Image Blocks are a versatile and modern way to display your prints. Each side of the acrylic is held together by magnets, meaning all you need to do is print the image you want to display, cut it to size, place it between the blocks and snap them back together. **No glue, no mess, no mistakes - and best of all, it can be used time and time again!**

The Magnetic Acrylic Image Blocks can also be used as a double-sided frame (simply insert two images back to back, or print on one of PermaJet's Double Sided range) ideal for any home, retail outlet or office environment as a countertop display.

Made from the very highest quality clear acrylic with an ultra-smooth polished edging. Precision routed corners allow the magnets to seat perfectly on each corner, enabling the two acrylic photo frames to come together seamlessly and ready for showcasing.

- 20mm thickness (both blocks combined)
- No tools required to assemble
- Quick and easy to use and replace photos, graphics, point of sale and more
- Perfect solution for unique gifts or display materials

CODE	SIZE
APJ30000	6" x 4"
APJ30010	7" x 5"
APJ30020	8" x 6"
APJ30030	A5
APJ30040	A4

CREASING TOOLS

PAPER CREASER A2

This manually operated desktop creasing solution allows you to easily produce personalised greeting cards for the print, craft & graphics industries with the most precise and highest quality results.

Constructed from the very highest quality powder-coated steel, a clean crease is guaranteed time after time using thick or hard papers/ card up to 450gsm weight (approximately 1.5mm thick) and with a maximum crease length of 460mm.

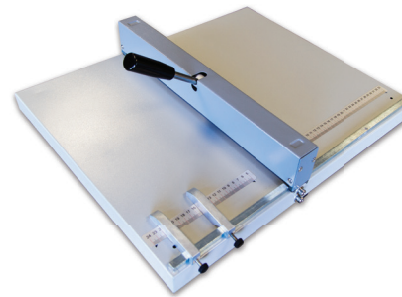
The sprung loaded pressure bar means that you don't need to apply very much pressure even when working with the thickest card.

You can adjust the clearance depth of the crease bar which will apply clear lines, even on standard photocopy paper and this feature eliminates the possibility of cracking the coating of more delicate media such as digital fine art inkjet papers.

Technical Specification:

- Robust, all steel construction
- Max creasing length 460mm (A2)
- Max card weight 450gsm
- Spring loaded pressure lever
- Full Instructions
- Net Weight 6.65kg
- Overall Dimensions: 600mm x 490mm x 115mm

A great tool for using in conjunction with the PermaJet SnapShut Folio books and making your own personalised cards.



CODE	DESCRIPTION	SIZE
APJ29211	A2 Paper Creaser	525mm

HAND HELD SCORER

This simple hand tool is a cost effective, low volume creasing solution that allows you to make defined crease lines in most paper surfaces.



With the aid of a straight edge/ruler (not supplied), a clean crease is guaranteed by running the tool back and forth a few times over the paper surface to create the crease. If you apply a constant pressure, you can achieve perfect creases even on the thickest card materials.

The smooth edges of this hard-wearing tool eliminates the possibility of any damage or cracking on the inkjet coating of more delicate media such as digital fine art inkjet papers.

CODE	DESCRIPTION
APJ24531	Hand Paper Scorer

MOUNTBOARD



PermaJet have the perfect range of high quality uncut mountboard designed to enhance your work and create an instant visual impact. The edges are precision cut for a clean, accurate finish. This UK manufactured board is 100% acid-free and **approved by the Fine Art Trade Guild.**

Available in a selection of three finishes/colours in a size of 500mm x 400mm. Choose from Ice White (Smooth), Snow White (Textured) and Black (Smooth). All the boards have a white core which is the most popular style.

	Snow White	Ice White	Black
Pure white bevel core	✓	✓	✓
100% conservation quality	✓	✓	X
Alkaline PH with a Calcium Carbonate buffer (PH 7.5 - 9.5)	✓	✓	✓
1400 micron thickness (1.4mm)	✓	✓	✓
Size 500mm x 400mm	✓	✓	✓
Precision guillotined for size accuracy	✓	✓	✓

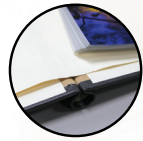
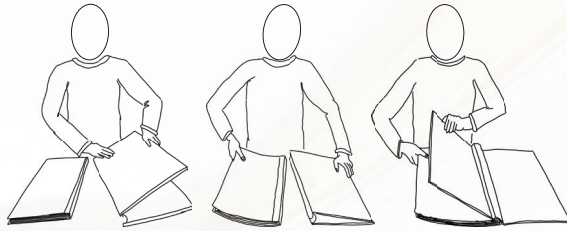


CODE	PRODUCT	PACK SIZE
APJ26000	M/board Ice White 500x400mm	5
APJ26001	M/board Snow White 500x400mm	5
APJ26002	M/board Black 500x400mm	5

SNAPSHOT

www.permajet.com T: +44 (0)1789 739200

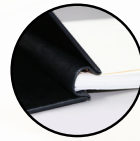
The innovative image storage & presentation Folio with the look and feel of a true photobook.



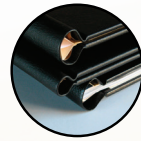
ADD, REMOVE & CHANGE PAGES IN SECONDS



DISPLAY & STORE PAPER OR PRINTS



TOUGH, SCRATCH-RESISTANT LEATHER-LOOK OUTER COVER



CREATE INNOVATIVE & CREATIVE PORTFOLIOS

- ✓ **100% GLUE-FREE HINGE DESIGN**
Add, remove or interchange pages in seconds
- ✓ **IDEAL FOR DISPLAYING & STORING PAPER OR PRINTS**
Creates a book format for any paper media
- ✓ **TOUGH, SCRATCH-RESISTANT COVER**
Designed with repetitive handling in mind
- ✓ **SUITABLE FOR ANY BOOK OR FOLIO**
Flexibility to create innovative presentations

The **SNAPSHOT FOLIO** offers so many creative possibilities with a professional appearance:

- ✓ PHOTOBOOK OF YOUR IMAGES
- ✓ COMMERCIAL PRESENTATIONS
- ✓ MODEL PORTFOLIOS
- ✓ STUDENT DISSERTATIONS
- ✓ GENERAL FILE STORAGE

15mm spine (holds approximately 35 pages)*

25mm spine (holds approximately 50 pages)*

*(based upon a mid-weight 250gsm inkjet paper - more sheets can be inserted if on thinner materials)

CODE	SURFACE	COLOUR	SIZE	ORIENTATION	SPINE DEPTH
APJ25509	Leather Look	Black	A5	Landscape	15mm
APJ25521	Leather Look	Cream	A5	Landscape	15mm
APJ25510	Leather Look	Black	A5	Landscape	25mm
APJ25522	Leather Look	Cream	A5	Landscape	25mm
APJ25503	Leather Look	Black	A5	Portrait	15mm
APJ25515	Leather Look	Cream	A5	Portrait	15mm
APJ25504	Leather Look	Black	A5	Portrait	25mm
APJ25516	Leather Look	Cream	A5	Portrait	25mm

CODE	SURFACE	COLOUR	SIZE	ORIENTATION	SPINE DEPTH
APJ25559	Leather Look	Black	A3	Landscape	15mm
APJ25571	Leather Look	Cream	A3	Landscape	15mm
APJ25560	Leather Look	Black	A3	Landscape	25mm
APJ25572	Leather Look	Cream	A3	Landscape	25mm
APJ25553	Leather Look	Black	A3	Portrait	15mm
APJ25565	Leather Look	Cream	A3	Portrait	15mm
APJ25554	Leather Look	Black	A3	Portrait	25mm
APJ25566	Leather Look	Cream	A3	Portrait	25mm

CODE	SURFACE	COLOUR	SIZE	ORIENTATION	SPINE DEPTH
APJ25534	Leather Look	Black	A4	Landscape	15mm
APJ25546	Leather Look	Cream	A4	Landscape	15mm
APJ25535	Leather Look	Black	A4	Landscape	25mm
APJ25547	Leather Look	Cream	A4	Landscape	25mm
APJ25528	Leather Look	Black	A4	Portrait	15mm
APJ25540	Leather Look	Cream	A4	Portrait	15mm
APJ25529	Leather Look	Black	A4	Portrait	25mm
APJ25541	Leather Look	Cream	A4	Portrait	25mm

CODE	SURFACE	COLOUR	SIZE	ORIENTATION	SPINE DEPTH
APJ25584	Leather Look	Black	A3+	Landscape	15mm
APJ25596	Leather Look	Cream	A3+	Landscape	15mm
APJ25585	Leather Look	Black	A3+	Landscape	25mm
APJ25597	Leather Look	Cream	A3+	Landscape	25mm
APJ25578	Leather Look	Black	A3+	Portrait	15mm
APJ25590	Leather Look	Cream	A3+	Portrait	15mm
APJ25579	Leather Look	Black	A3+	Portrait	25mm
APJ25591	Leather Look	Cream	A3+	Portrait	25mm

Also available in square format at www.permajet.com

ICC PROFILING

WHAT IS AN ICC PROFILE?

An ICC profile is essentially a small instruction file within which a series of coded correctional commands and data are contained. When loaded into its associated program, e.g. Adobe Photoshop, these commands are activated and create adjustments to colours, brightness and saturation in the output device (whether it be a monitor or a printer).

When printing, the use of a profile ensures the printer is laying down the correct amount of ink for the media type. This can have a huge effect on the colour output, therefore making a true representation of the original colours seen in the digital image.

And if you're wondering, 'ICC' stands for International Color Consortium (website: www.color.org).

WHY ARE MY COLOURS WRONG IN THE FIRST PLACE?

There are three stages to ensuring that your inkjet printing is colour correct.

Stage 1: begins with the camera or scanner device. When these capture an image with their light sensitive 'eyes', they all interpret colours in slightly different ways owing to varying light sources or

reflectance. Many cameras and devices capture in a colour space called sRGB as a default which is ideal for your monitor and suits its ability to display the colours as closely as possible to the original. Monitor profiling is not the same as printer/paper profiling and so these are usually created using one of the many monitor profiling devices available on the market. PermaJet offers a wide range of the best monitor profiling products currently available - visit www.permajet.com for more information.

Stage 2: is one of the most overlooked areas of colour correction. All monitors interpret and display colours differently, very much like a television screen. How many times have you walked into an electrical store and viewed a row of television screens that all show different colours, densities and contrast levels (even between the same models or manufacturers)? Profiling your monitor to show you colours as true to life as possible means that any adjustments you make will improve your image and not make it worse!

Stage 3: is the most important area which always needs to be addressed by profiling. In some cases, photographers don't even realise that their colours are printing incorrectly until the prints

are viewed under varying light sources. Without the use of an ICC profile to harmonise the printer, paper and ink combination, you will experience great frustration when trying to produce digital inkjet prints that closely replicate what is seen on the screen.

WHY DO THE COLOURS THAT I SEE ON MY MONITOR NOT ALWAYS MATCH MY PRINTS FROM THE PRINTER?

The printer, ink, and paper combination will all contribute and have an effect on your final prints. All manufacturers use different paper coatings and ink formulations which cause these variations.

The only way to correct this is to work with profiles, whether they are generic (created on a single selected printer) as a starting point or to be 100% accurate, ones that have been custom created specifically for your printer, ink and paper combination.

WHY USE ICC PROFILES?

An ICC profile will ensure that you produce perfectly colour balanced prints every time. Each paper will vary in base, texture characteristics, ink absorbency and coating layer technology

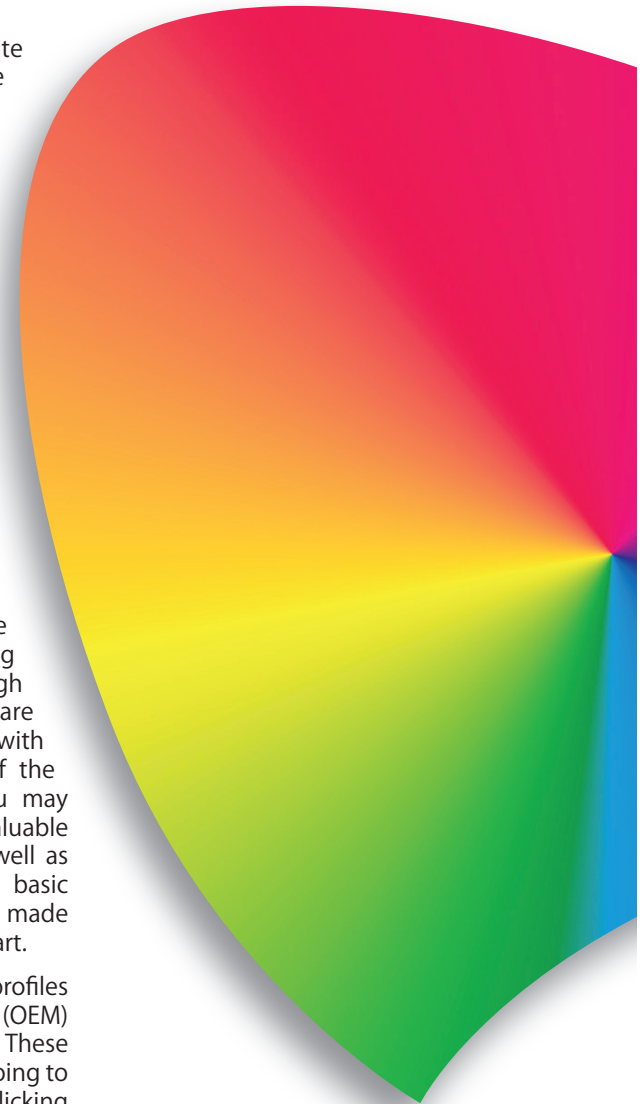
so you will need a separate profile for every paper type with your printer. Profiles are extremely useful, eliminating time, ink and paper wastage.

WHY DO PERMAJET OFFER GENERIC PROFILES IF THEY MIGHT NOT BE 100% ACCURATE?

Generic profiles are a great starting point, and for some people may provide completely satisfactory results. Certain paper and ink manufacturers fail to provide even the most basic generic profiles. Imagine your frustration when having just invested in a pack of high quality inkjet paper, you are unable to use it instantly with at least a small chance of the colours being correct! You may well end up throwing valuable sheets of paper away (as well as wasting ink) all because a basic generic profile was not made available to you from the start.

PermaJet offers generic ICC profiles for use with both original (OEM) inks and its own ink sets. These are easily downloaded by going to www.permajet.com and clicking on the 'ICC Profiles' tab at the top of the home page.

**Ever wondered why your prints don't match what you see on the screen?
An ICC profile may just be the answer to your problems.**





Custom profiles are available for all PermaJet papers at www.permajet.com



Visit our YouTube channel for support www.youtube.com/PermaJetUK



ICC profiles for PermaJet paper are always **100% FREE**. If you are using non-PermaJet paper you can still take advantage of the profiling service too.

www.permajet.com T: +44 (0)1789 739200

WHAT IS A CUSTOM ICC PROFILE?

A custom ICC profile is tailor made to your specific printer, ink and paper combination. The use of PermaJet's custom profiling service is highly recommended as it guarantees 100% colour accuracy when you print your images.

If you have already tried the generic profile and require better colour accuracy, PermaJet is always more than happy to create a custom profile for you. And remember, this is a totally FREE service when using any of PermaJet's papers or canvases.

Non-PermaJet papers can use this service at a cost (consult the website for details).

HOW EASY IS IT TO USE THE CUSTOM PROFILING SERVICE?

Creating a custom profile is very straightforward, but like all high technology processes, a specific procedure must be followed directly and carefully to get the correct results. Full instructions or advice are always available.

There are three main stages...

Stage 1: Visit PermaJet's website and download the target patch file that will be used to build and create your custom profile. The target patch file chart is a layout of hundreds of coloured squares which our highly accurate spectrophotometer will scan and use to determine any colour inaccuracies, in turn creating the corrective profile.

Stage 2: In order for the target patch file to be correctly printed on your chosen paper, it is crucial that the colour management within the printer driver is switched off. This is so we can measure how the printer prints, and not how the driver tries to improve the print.

If the printer colour management remains enabled, there will be conflicting information on your printed target patch files. In turn, you will receive a totally inaccurate profile.

Many of today's printer manufacturers utilise different software drivers from one printer to another, meaning that they have different methods of switching off the colour management mode.

However, Adobe have a free program available to make this job easy called the 'Adobe Color Printer Utility'. It is vital that you use

this when printing the chart to get accurate results. We give you details of how to download the ACPU on our website.

Stage 3: Finally, when you have printed the target patch file chart, simply post the printed result together with the completed profiling service form to us. Once received, they are scanned, the profile is generated and is then e-mailed to you as an attachment with the "How to Use and Install Profiles" document. Once installed, they will appear in the drop down menu within your editing program allowing you to select them for the paper/ink combination for which they were created.

HOW DO I PRINT THE TARGET PATCH CHART FILE FOR A CUSTOM PROFILE?

- i) Download the free ADOBE COLOR PRINTER UTILITY from our website.
- ii) Open the downloaded PermaJet target patch file within that program (always ensure you have the latest one from the www.permajet.com website).
- iii) When you open the file in the Adobe Color Printer Utility, it should appear in portrait format ready to print. Do not edit or change the size of this file as it must be kept and

retained at a scale of 100% (to fit A4 size paper).

iv) Now print the patch file on the paper you need to profile and ensure you set the correct recommended media setting, quality and switch off the colour management in your printer driver (on PC version only – MAC computers will do this for you automatically).

v) Once printed, post the file into us to create the profile which we will e-mail to you.

You are always welcome to contact technical@permajet.com for further information on colour management and ICC profiling.



Not all editing software supports the use of ICC profiles and so it is always best to check in advance that your setup supports colour management. Currently, you are definitely able to create and use ICC profiles from all versions of Adobe Photoshop, Photoshop Elements 3 onwards, Adobe Lightroom, Aperture, Corel Painter, QuarkXPress, and QImage amongst others. However, there are obviously slight variations in the way the settings are configured between these applications and printer drivers, so if in doubt, please call us on 01789 739200. * All users should use the Adobe Colour Print Utility (ACPU) to print target patches, free to download from www.adobe.com or www.permajet.com.

THE PHOTOGRAPHIC ACADEMY

Learn

Learn new skills & creative techniques to take your photography to the next level.

Grow

Leave the Academy with a newfound confidence that will help you improve your portfolio.

Be inspired

Find inspiration from leading photographers while you explore new techniques.

See the website for the full list of current courses

FROM PRINT TO PERFECTION

Location: Stratford-Upon-Avon

On this course you'll learn the essentials of colour management and choosing the right paper in order to achieve the perfect print. Walk away with the confidence to print your images successfully.

CONVERTING & PRINTING MONOCHROME WITH CONFIDENCE

Location: Stratford-Upon-Avon

This specialist workshop covers everything involved in producing and printing high quality monochrome images. Anyone can produce unrivalled monochrome prints by instilling confidence in the belief that you are doing it properly.

INFRARED PHOTOGRAPHY - FROM CAMERA TO IMAGE

Location: Stratford-upon-Avon

Discover the beauty of infrared photography for all seasons. Learn about everything from camera choice and IR filter options, composition and exposure, to post-processing methods and a location shoot.

CREATIVE FLOWER PHOTOGRAPHY WITH CHERRY LARCOMBE

Location: Zoom Webinar

This workshop with Cherry Larcombe explores creative ideas to bring out the colour, shapes and beauty of flowers, both outdoor and indoor. Learn techniques on how to produce some unique floral art.

SEEING IMAGES WITH LEIGH PRESTON (PART 1)

Location: Zoom Webinar

This webinar is about making the most of the opportunities that you create as a photographer – using a number of different approaches to varying subjects, lens-work, angle of view, and viewpoint. You'll explore ways of adding intuition, influences, emotion, composition, and involvement.

LET'S TALK MONO WITH LEIGH PRESTON (PART 2)

Location: Zoom Webinar

Explore suitable subjects for mono, and the various ways you can interpret a picture in monochrome. You'll look at a range of images and a series of before and after examples with the stages of 'change and adjustment' to realise the best print as an end result.

GETTING TO KNOW AFFINITY PHOTO (PART 1 & 2)

Location: Stratford-upon-Avon

Affinity Photo is an alternative to Adobe Photoshop but at a fraction of the cost. Like all complex programs it takes time and practice to get to know its capabilities and to find the best methods to get the most out of it in the shortest time. This two part workshop will teach you the essentials.

LONG EXPOSURE DAYLIGHT PHOTOGRAPHY

Location: Zoom Webinar

In this workshop we will discuss the equipment required for long-exposure and the process of taking the pictures with details of some suitable locations.

PRINT LIFELINE: 1-TO-1 SUPPORT

Location: Zoom

If you're struggling with your print settings, need technical help with your inkjet printer, or want personal advice on choosing the right paper for your images... Print Lifeline is for you.

This hour long 1-to-1 online session offers individual support tailored to suit your requirements.

The handpicked team of tutors that teach at The Photographic Academy are experienced and passionate photographers and industry professionals. They include a number of the UK's top photographic lecturers:

David Lowe ARPS DPAGB

Photographer & Camera Club lecturer

Simon Weir

Professional Photographer

Colin Hulley

PermaJet sales & technical support

Leigh Preston FRPS, EFIAP, MPAGB

Photographer & Judge

Siddique Hussain

Tutor & Photographer

Cherry Larcombe EFIAP ARPS DPAGB BPE*5

Photographer & Camera Club lecturer

Visit www.thephotographicacademy.co.uk or speak to Louise Hill, Academy Head, on **01789 739207** for more information and to book your place.

THE KNOWLEDGE

A QUICK REFERENCE GUIDE FOR THE PERMAJET MATERIALS

	Weight (gsm)	Ink Type	Base Fibre	Surface Character	Whiteness CIE	Thickness (mm)	OBA Free	Acid Free	100% Cotton	Water Resistant	Suited for Colour	Suited for B&W	Use with Dye Inks	Use with Pigment Inks
Gloss 271	271	PK	Microporous	Bright Gloss	131	0.27				✓	✓	✓	✓	✓
Oyster 271	271	PK	Microporous	Satin	131	0.27				✓	✓	✓	✓	✓
Smooth Pearl 280	280	PK	Microporous	Pearl	103	0.30				✓	✓	✓	✓	✓
Smooth Gloss 280	280	PK	Microporous	Gloss	150	0.30				✓	✓	✓	✓	✓
Titanium Lustre 280	280	PK	Microporous (Silver)	Lustre	96	0.28				✓	✓	✓	✓	✓
Titanium Gloss 300	300	PK	Microporous (Silver)	Gloss	97	0.28				✓	✓	✓	✓	✓
Ultra Pearl 295	295	PK	Microporous	Lustre/Satin	99	0.28				✓	✓	✓	✓	✓
Photo Lustre 310	310	PK	Microporous	Lustre	112	0.30				✓	✓	✓	✓	✓
Matt Plus 240	240	MK	Alpha Cellulose	Smooth	145	0.26		✓		✓	✓	✓	✓	✓
Matt Proofing 160	160	MK	Alpha Cellulose	Smooth	155	0.19		✓		✓	✓	✓	✓	✓
Digital Transfer Film 165µ	165µ	PK	Clear Film	Translucent Film		0.16	✓			✓		✓	✓	✓
FB Gold Silk 315	315	PK	100% Alpha Cellulose	Silk-Satin	101	0.31		✓		✓	✓	✓	✓	✓
FB Royal Gloss 310	310	PK	100% Alpha Cellulose	Semi-Gloss	98.5	0.34		✓		✓	✓	✓	✓	✓
FB Distinction 320	320	PK	100% Alpha Cellulose	Semi-Gloss	106	0.35		✓		✓	✓	✓	✓	✓
FB Pearl 300	300	PK	100% Alpha Cellulose	Pearl	94	0.34	✓	✓		✓	✓	✓	✓	✓
FB Matt 285	285	MK	100% Alpha Cellulose	Smooth	101.5	0.31		✓		✓	✓	✓	✓	✓
Portrait White 285	285	MK	100% Alpha Cellulose	Fine Textured	105.5	0.47		✓		✓	✓	✓	✓	✓
Portfolio Rag 220	220	MK	100% Cotton	Very Fine Textured	88.5	0.32		✓	✓	✓	✓	✓	✓	✓
Portrait Rag 285	285	MK	100% Cotton	Very Fine Textured	92	0.51		✓	✓	✓	✓	✓	✓	✓
Omega Rag 310	310	MK	100% Cotton	Smooth	107.5	0.43		✓	✓	✓	✓	✓	✓	✓
Alpha Natural Rag 310	310	MK	100% Cotton	Smooth	88.5	0.43	✓	✓	✓	✓	✓	✓	✓	✓
Photo Art Silk 290	290	MK	100% Alpha Cellulose	Smooth Silk	103	0.48		✓		✓	✓	✓	✓	✓
Museum Heritage 310	310	MK	25% Cotton 75% Alpha Cellulose	Textured	91	0.50		✓		✓	✓	✓	✓	✓
Gallery Etching 310	310	MK	100% Alpha Cellulose	Textured	88	0.51	✓	✓		✓	✓	✓	✓	✓
Artist Watercolour 250	250	MK	100% Alpha Cellulose	Mould Made Textured	89	0.43	✓	✓		✓	✓	✓	✓	✓
Baryta Rag 310	310	PK	100% Cotton	Satin	95.1	0.43	✓	✓	✓	✓	✓	✓	✓	✓
Smooth Rag 310	310	MK	100% Cotton	Smooth	93.2	0.44	✓	✓	✓	✓	✓	✓	✓	✓
Etching Rag 310	310	MK	100% Cotton	Textured	92.1	0.52	✓	✓	✓	✓	✓	✓	✓	✓
Watercolour Rag 310	310	MK	100% Cotton	Textured	94.9	0.50	✓	✓	✓	✓	✓	✓	✓	✓
Double Sided Matt 250	250	MK	Alpha Cellulose	Smooth	155	0.28				✓	✓	✓	✓	✓
Double Sided Oyster 285	285	PK	Microporous	Satin	128	0.29				✓	✓	✓	✓	✓
Double Sided Portfolio 230	230	MK	100% Cotton	Very Fine Textured	93.8	0.33		✓	✓	✓	✓	✓	✓	✓
Double Sided Lustre 295	295	PK	Microporous	Lustre	115	0.29				✓	✓	✓	✓	✓
Neptune Natural Matt Canvas 400	400	MK	100% Cotton Canvas	Matt	78	0.61			✓	✓	✓	✓	✓	✓
Saturn Semi-Gloss Canvas 350	350	PK	Polyester/Cotton Canvas 65/35	Semi-Gloss	92.1	0.48	✓			✓	✓	✓	✓	✓
Mercury Ultra White Matt Canvas 405	405	MK	Polyester/Cotton Canvas 65/35	Smooth Matt	121	0.60				✓	✓	✓	✓	✓
P3 Matt Canvas 380	380	MK	Polyester/Cotton Canvas 80/20	Fine Textured	110	0.50				✓	✓	✓	✓	✓
P4 100% Cotton Canvas 360	360	MK	100% Cotton Canvas	Fine Textured	75	0.46	✓		✓	✓	✓	✓	✓	✓
P5 Bright White Matt Canvas 350	350	MK	Polyester/Cotton Canvas 20/80	Very Fine Textured	130	0.45				✓	✓	✓	✓	✓

FIND YOUR LOCAL UK DISTRIBUTOR OR OVERSEAS AGENT AT:

WWW.PERMAJET.COM/WHERE_TO_BUY



PermaJet
PROFESSIONAL INKJET MEDIA



ArtSure
Digital print quality you can trust

TEL: 01789 739200

www.permajet.com sales@permajet.com

1A Black Hill Industrial Estate, Warwick Road, Stratford-upon-Avon, Warwickshire, CV37 0PT, England
Tel: +44 (0)1789 739 200 | Fax: +44 (0)1789 731 569 | e-mail: info@permajet.com | www.permajet.com

SHEET SIZES

Size	mm	inches
6" x 4"	152 x 101	
7" x 5"	177 x 127	
A4	210 x 297	8 ¹ / ₄ x 11 ¹ / ₂
A3	297 x 420	11 ¹ / ₂ x 16 ¹ / ₂
A3+	330 x 483	13 x 19
A2	420 x 594	16 ¹ / ₂ x 23
A1	594 x 841	23 ¹ / ₂ x 33

ROLL WIDTHS

Size	Width
13"	330mm
17"	432mm
24"	610mm
36"	914mm
44"	1118mm
50"	1270mm
60"	1524mm

PermaJet is a registered trade mark of The Imaging Warehouse Ltd. and part of The Imaging Warehouse Group. PermaJet reserve the right to change product lines. E&OE. All registered trade names and trademarks used in this publication are acknowledged as being the property of their respective owners. Printed in England.

